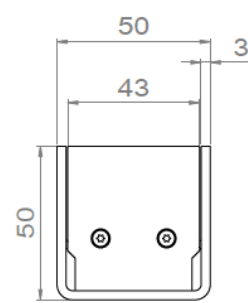
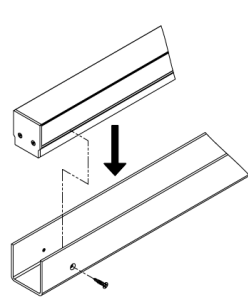
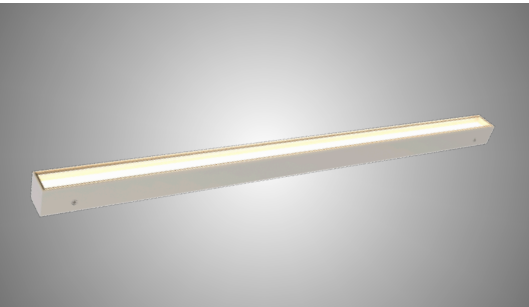


---



## IK10 LINEAR



IK10 LINEAR

Range	Recessed linear light	
Description	Aluminum profile integrated in a stainless steel U support Polycarbonate diffuser	
Finish	RAL upon request	
Dimensions	Profile	Integrating U
	Width : 43mm Height : 47mm	Width : 50mm Height : 50mm
	Length from 500mm to 2,500mm max. – Cut-out size 100mm	
Net weight	Profile : 4 kg/m Integrating U : 3.3kg/m	
LED characteristics	2700K – 3000K – 3500K – 4000K – 5000K (other upon request) CRI80 ou 90 (95 upon request) MacAdam 3 steps	
Luminous flux	2500 lumen max. per meter	
Connection	5m maximum in series	
Power supply	24V separate power supply For the US & Canada use a UL class 2 driver	
LED power	30W/m max.	
Use limitations	The drivers, if not delivered by LOuss, must be approved before use	
Warranty	Life span: L80B10 at 50,000 hours (80% remaining flux) at 25°C ambient temperature 3-year parts and labor warranty  The warranty does not apply to products that have been opened, modified or repaired and does not cover the effects of a wrong connection, careless, abusive handling, overvoltage, lighting injury, as well as the normal wear of the product  All products are electrically tested and received a functional burn-in	

All the connections have to be made before powering up,  
otherwise the luminaires could be seriously damaged



Last update : 2025.08.06

2/2