

## AURORE D82 RECESSED



## AURORE D82 TRIMLESS

<b>Range</b>	Highly flexible recessed ceiling downlight for general & accent cardanic lighting		
<b>Description</b>	Low luminance Monochrome, Trio or Tunable White Rotation 360° - Adjustable tilt 45°		
<b>Finish</b>	White RAL 9003 matt finish Black RAL 9005 matt finish (other upon request)		
<b>Dimensions</b>	Spotlight diameter : 81mm Installation diameter : 158.5mm Installation depth : 68.5mm		
<b>Net Weight</b>	0.9Kg		
<b>LED characteristics</b>	<b>Monochrome version</b>	<b>Trio version</b>	<b>Tunable White version</b>
	2700K - 3000K - 4000K - 3500K - 5000K (other upon request)	2700K + 4000K + 6500K (not tunable)	2700K + 4000K + 6500K
	MacAdam ellipse: 3 SDCM (standard) 2 SDCM (premium) CRI 90 (standard) - CRI 95, R9>90 (premium)		
<b>Optical beams</b>	<b>Monochrome &amp; version</b>		<b>Tunable White &amp; Trio versions</b>
	12° - 15° - 25° - 30° - 40° - Elliptical		8° - 20° - 30° UGR < 15
<b>Accessories</b>	Filters, honeycomb grid upon request		
<b>Luminous flux</b>	<b>Monochrome version</b>		<b>Tunable White &amp; Trio versions</b>
	1,500 to 2,500 lumen according to version		2,300 to 2,600 lumen according to version
<b>Connection</b>	<b>Monochrome &amp; Trio versions</b>		<b>Tunable White version</b>
	Delivered with 0.5m cable		Supplied with 0.5m cable with 6 conductors Daisy chain version : 2 input-output cables for serial cabling
<b>Power supply</b>	<b>Monochrome &amp; Trio versions</b>		<b>Tunable White version</b>
	Remote constant current driver 700mA max. according to version Dimmable driver upon request		Remote constant current DMX driver 700mA max. (1A possible with driver flanged at 30W max)
<b>Power</b>	<b>Monochrome version</b>		<b>Tunable White &amp; Trio versions</b>
	15W to 25W driver included		30W max. driver included

All the connections have to be made before powering up, otherwise the luminaires could be seriously damaged.



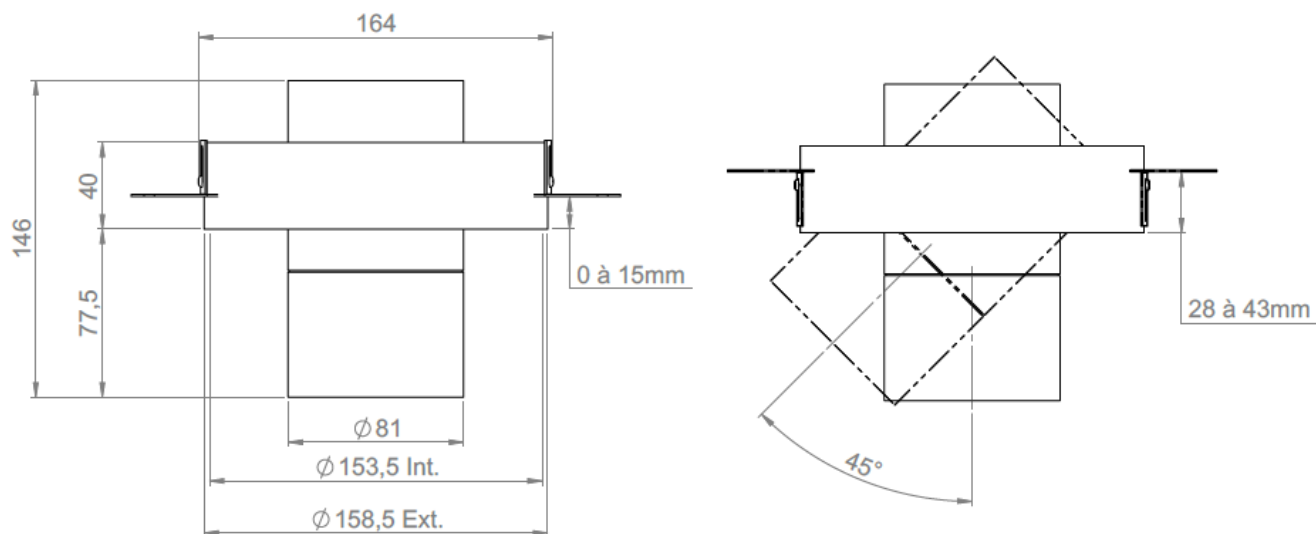
## AURORE D82 TRIMLESS

<b>Use limitations</b>	<p>The product must be installed in a ventilated area</p> <p>Any use with an ambient temperature higher than the specified ambient temperature (Ta) would lead to a more rapid mortality of the product and the withdrawal of our guarantees</p> <p>The drivers, if not delivered by LOuss, must be approved before use</p>
<b>Warranty</b>	<p>Life span : L80B10 at 50,000 hours (80% remaining flux) at 25°C ambient temperature.</p> <p>3-year parts and labour warranty</p> <p>The warranty does not apply to products that have been opened, modified or repaired and does not cover the effects of a wrong connection, careless, abusive handling, overvoltage, lightning injury, as well as the normal wear of the product</p> <p>All products are electrically tested and received a functional burn-in</p>

All the connections have to be made before powering up,  
otherwise the luminaires could be seriously damaged.



## AURORE D82 TRIMLESS



All the connections have to be made before powering up,  
otherwise the luminaires could be seriously damaged.

LOUSS

Mise à jour : 19.06.2025

4/6

BEST SAS, Capital 200 000€  
RCS Dijon B 408 483 485  
TVA/VAT n° : FR94 408 483 485  
APE 2612Z

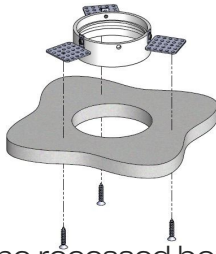
Tel. : +33 380 48 65 68  
contact@louss.fr  
[www.louss.fr](http://www.louss.fr)  
Best & LOUSS

Siège social / Head Office  
PA Les Terres d'Or  
Route de Saint Philibert  
21220 Gevrey Chambertin - FRANCE

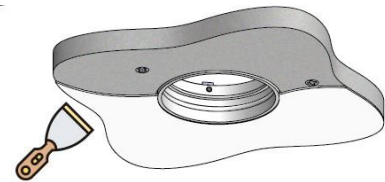


## AURORE D82 TRIMLESS

### Installation from above



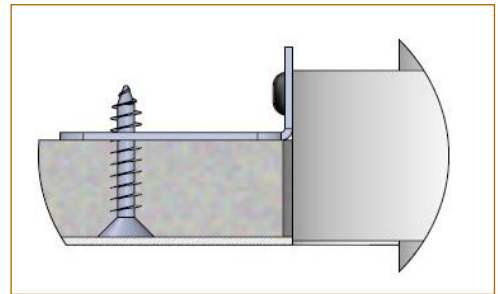
Install the recessed box from above and screw it into the surface



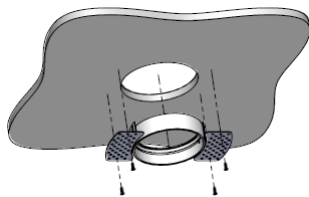
Cover the lateral plates of the recessed box by coating and painting



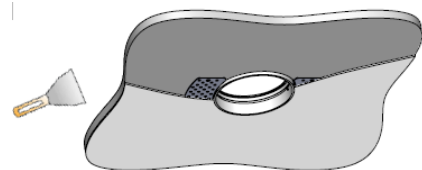
Insert the spotlight from below



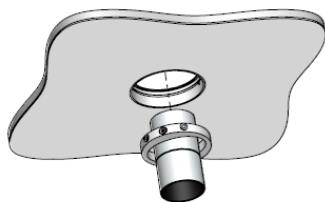
### Installation from below



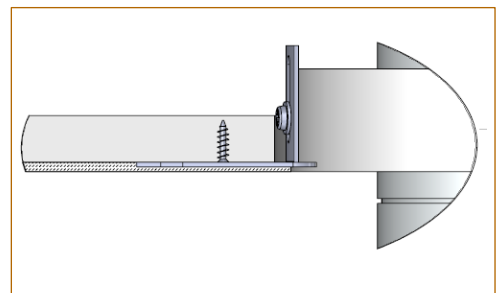
Install the recessed box from below and screw it into the surface



Cover the lateral plates of the recessed box by coating and painting



Insert the spotlight from below



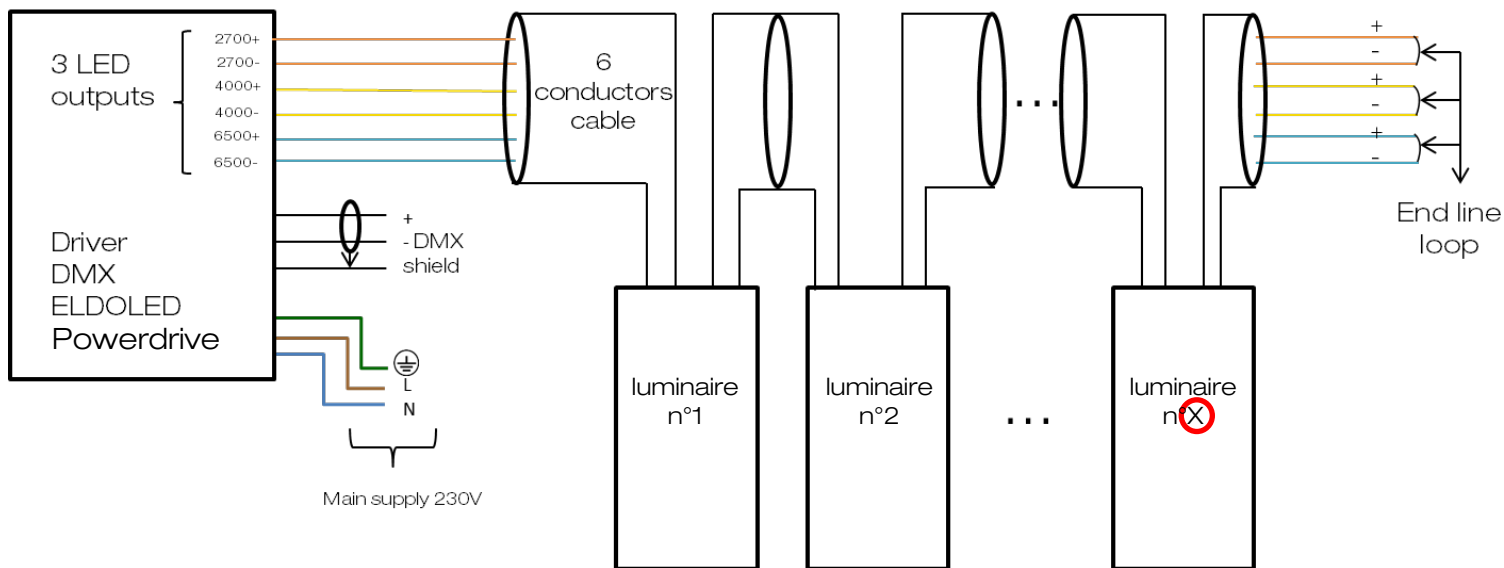
All the connections have to be made before powering up, otherwise the luminaires could be seriously damaged.



# AURORE D82 TRIMLESS TUNABLE WHITE

## 3 COLOR TEMPERATURES

### DMX Daisy chain version – Wiring System



Example :

4 LED 2700K 700 mA/12 V 8.4W / luminaire

4 LED 4000K 700mA/12V 8.4W / luminaire

4 LED 6500K 700 mA/12V 8.4W / luminaire

Total 25.2W

Daisy chain version : 2 x 0.5m with 6 conductors

⊗ : according to driver's characteristics  
700mA /12V / 25W output / luminaire

Example :

- Driver ELDOLED Powerdrive 100W : Power = 100w Vout < 57V  
→ 3 luminaires / driver max.

- Driver ELDOLED Powerdrive 50W : Power = 50W Vout < 55V  
→ 2 luminaires / driver max.

All the connections have to be made before powering up,  
otherwise the luminaires could be seriously damaged.