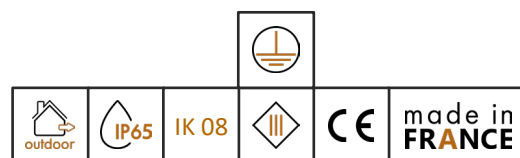


Wouss

Lighting Emotion



LAMPYRIS2





LAMPYRIS2

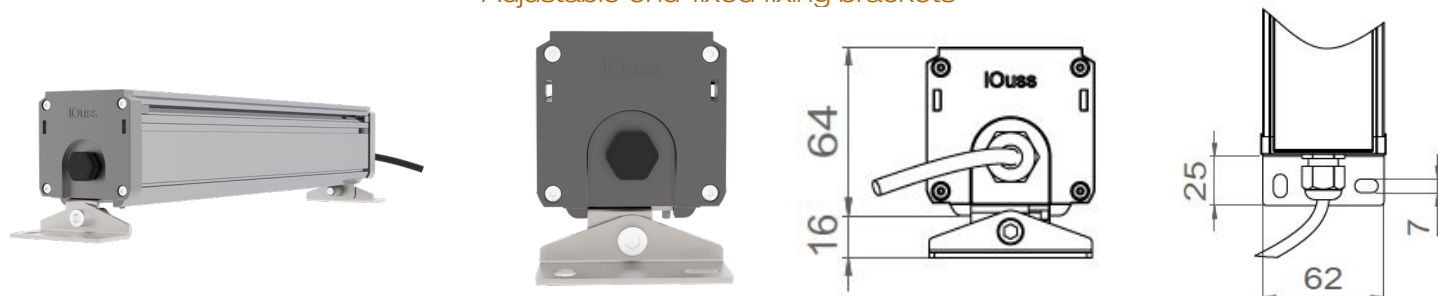
Range	Surface mounted architectural floodlighting	
Description	Aluminum body Transparent polycarbonate protector, treated to withstand UV Stainless steel mounting brackets	
Finish	Natural anodized aluminum (other upon request)	
Dimensions	Profile : 62 x 64mm Lengths : 350mm – 670mm – 990mm – 1310mm	
Weight	350mm : 1 kg 670mm : 2 kg 990mm : 2.5 kg 1310mm : 4 kg	
LED characteristics	2200K – 2700K – 3000K – 4000K – 5000K (other upon request) Twin White or RGBW	
	Monochrome	Twin White or RGBW
	350mm : 6 LEDs 670mm : 12 LEDs 990mm : 18 LEDs 1310mm : 24 LEDs	350mm : 12 LEDs 670mm : 24 LEDs 990mm : 36 LEDs 1310mm : 48 LEDs
Optical beams	6° - 15° - 30° - 40° - 60° - 18°x36° elliptical - 12°x50° elliptical - asymmetrical	
Connection	Supplied with 1m cable (more length upon request)	
Integrated power supply	Direct 230V : all versions (except for length 350mm RGBW / Twin White) Driver DMX for RGBW & Twin White versions (possibility of pre-recorded scenarios)	
Separate power supply	Lg 350mm RGBW / Twin White : 700mA max external constant current DMX driver (possibility of pre-recorded scenarios)	
LED power	6 LEDs : 12W / 12 LEDs : 24W / 18 LEDs : 36W / 24 LEDs : 40W max. 36 LEDs : 50W max. / 48 LEDs : 50W max	
Use limitations	Drivers, if not delivered by LOuss, must be approved before use All products are tested before delivery	
Warranty	Life span: L80B10 at 50 000 hours (80% remaining flux) 3-year parts and labor warranty This warranty covers problems related to the manufacture and components of our products The warranty does not apply if the product has been opened, modified or repaired Damage caused by improper connection, lightning, power surges or misuse is not covered Repairs are carried out in our workshop	

All the connections have to be made before powering up,
otherwise the luminaire could be seriously damaged

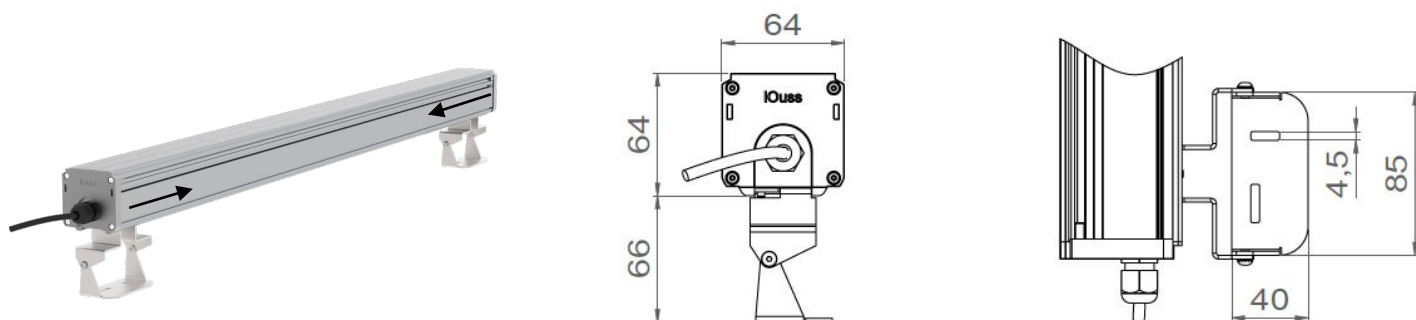


LAMPYRIS2

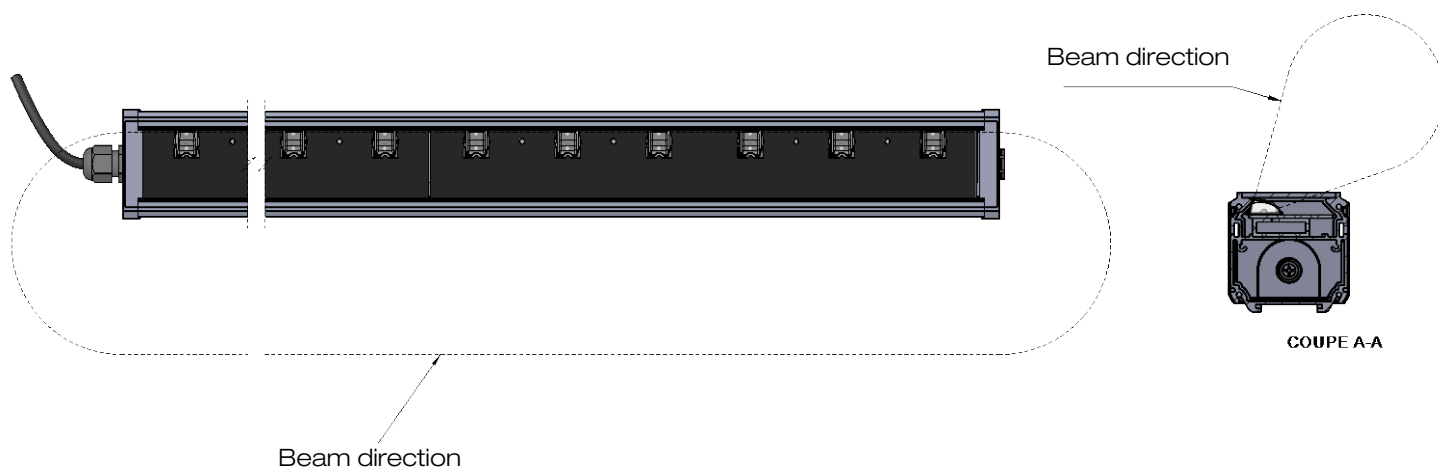
Adjustable end-fixed fixing brackets



Adjustable spacing fixing brackets



LAMPYRIS2 – Asymmetrical version



All the connections have to be made before powering up,
otherwise the luminaire could be seriously damaged

LOUSS

Last update : 2025.08.05

3/5

BEST SAS, Capital 200 000€
RCS Dijon B 408 483 485
TVA/VAT n° : FR94 408 483 485
APE 2612Z

Tel. : +33 380 48 65 68
contact@louss.fr
www.louss.fr
Best & LOUSS

Siège social / Head Office
PA Les Terres d'Or
Route de Saint Philibert
21220 Gevrey Chambertin - FRANCE



LAMPYRIS2 Twin White

The **LAMPYRIS2 TWIN WHITE** is equipped with LEDs with very high **CRI** (color rendering index) and **R9** (red rendering index), as well as **very high efficiency optics**.

This technology, developed by BEST group, of which LOuss is a member, was first installed in 2005 at the Bousquet jewellery store in Montpellier. Since then, it has been supplied to many of our customers, including some of the major jewellery houses.

The combination of two different white color temperatures reveals the color nuances of illuminated objects, as well as tonal variations, in a subtle way, thanks to a rich color spectrum.

2900K LEDs (warm white-yellow) bring out the best in jewelry, watches, yellow and rose gold items and warm shades in general.

4500K LEDs (cool bluish white) are ideal for jewelry, watches and items made of silver or steel, as well as cool shades and diamonds.

The **32mm-diameter optics** we use are highly efficient, enabling us to obtain very tight beams with a high number of candelas in the axis, giving the objects a radiant appearance.



The combination of the two color temperatures, together with the multiplication of narrow beams, creates a **3D lighting effect**, giving relief to illuminated objects which become bright and radiant.

All the connections have to be made before powering up,
otherwise the luminaire could be seriously damaged

LOuss

Last update : 2025.08.05

4/5

BEST SAS, Capital 200 000€
RCS Dijon B 408 483 485
TVA/VAT n° : FR94 408 483 485
APE 2612Z

Tel. : +33 380 48 65 68
contact@louss.fr
www.louss.fr
Best & LOuss

Siège social / Head Office
PA Les Terres d'Or
Route de Saint Philibert
21220 Gevrey Chambertin - FRANCE

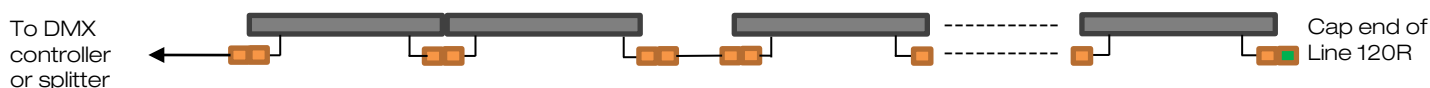


LAMPYRIS2

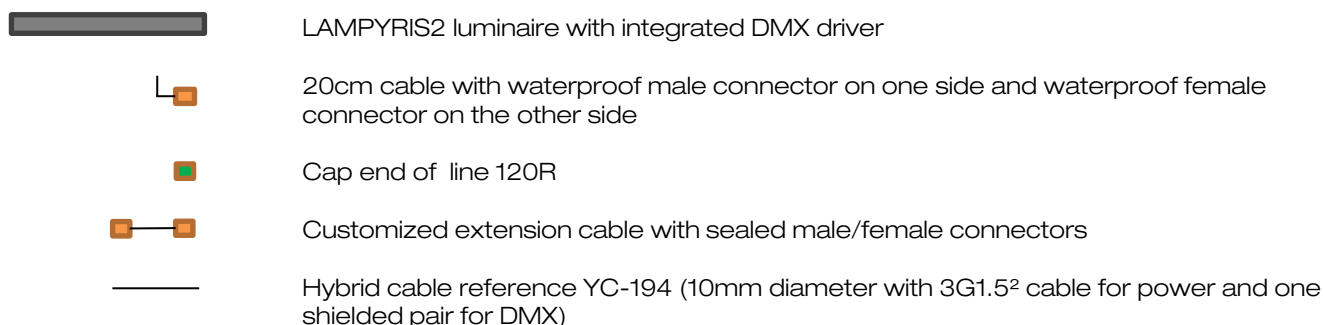
Connection guideline

Input/output connector version

Each luminaire is equipped with 2 waterproof metal connectors with 20cm locking cable
Cables output at the rear for a daisy-chain installation to obtain a continuous line



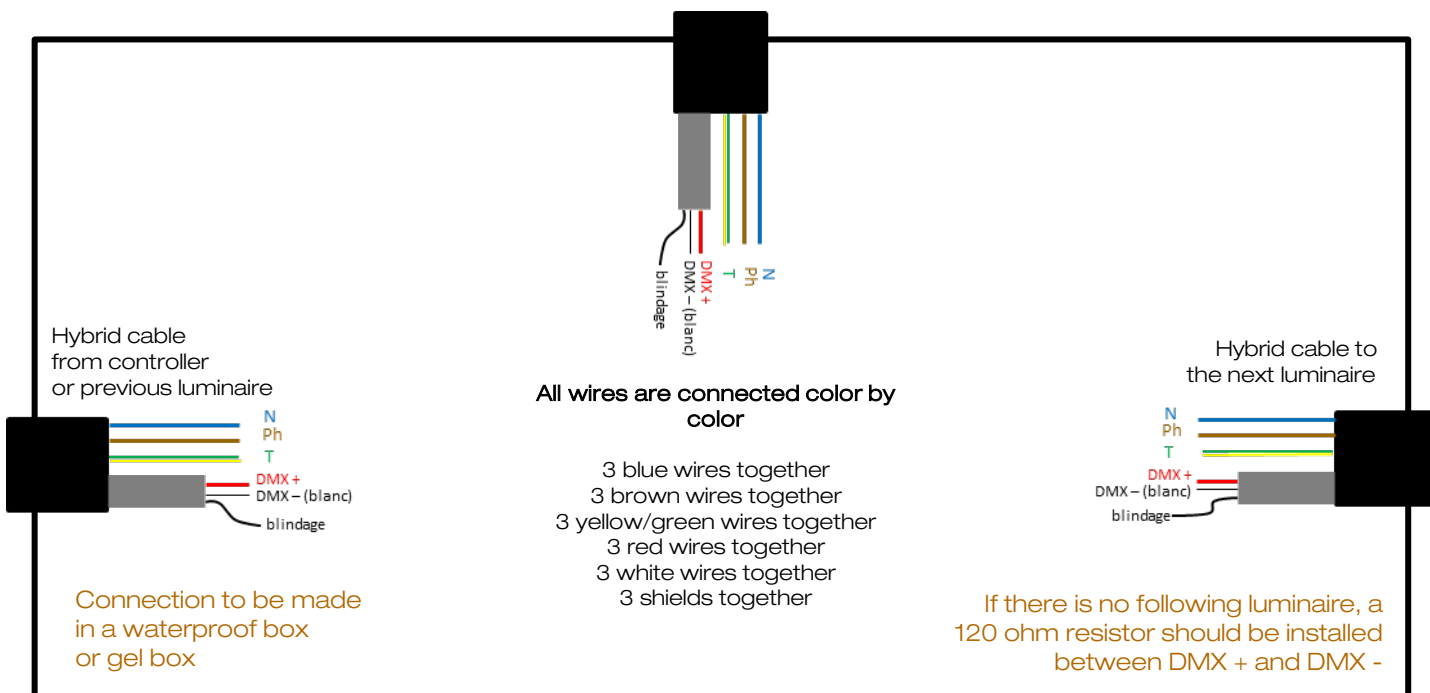
20 DMX luminaires maximum - 15 meters of LAMPYRIS2 maximum (600W)



Maximum total cable length from DMX controller (or splitter) to last luminaire = 300m
Beyond that, a repeater or splitter is required

Hybrid cable output version

Luminaire's hybrid cable



All the connections have to be made before powering up, otherwise the luminaire could be seriously damaged

Wouss

Lighting Emotion



LAMPYRIS2 POWER





LAMPYRIS2 POWER

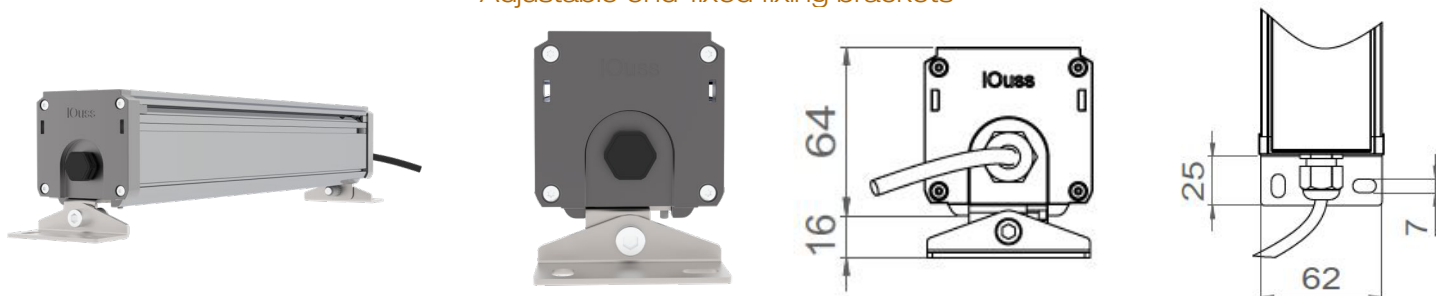
Range	Surface mounted architectural floodlighting – Power+ version
Description	Aluminum body Transparent polycarbonate protector, treated to withstand UV Stainless steel mounting brackets
Finish	Natural anodized aluminum (other upon request)
Dimensions	Profile : 62 x 64mm Lengths : 350mm – 670mm – 990mm – 1310mm
Weight	350mm : 1 kg 670mm : 2 kg 990mm : 2.5 kg 1310mm : 4 kg
LED characteristics	2200K – 2700K – 3000K – 4000K – 5000K (other upon request) Twin White or RGBW 350mm : 5x 4in1 LED 670mm : 10x 4in1 LED 990mm : 15x 4in1 LED 1310mm : 20x 4in1 LED
Optical beams	25° - 20° - 35° - 40° - 55° - 100° - 120°
Connection	Supplied with 1m cable (more length upon request)
Integrated power supply	Direct 230V : all versions (except for length 350mm RGBW / Twin White) Driver DMX for RGBW & Twin White versions (possibility of pre-recorded scenarios)
Separate power supply	Lg 350mm RGBW / Twin White : 350mA max external constant current DMX driver (possibility of pre-recorded scenarios)
LED power	350mm, 670mm, 990mm : 40W/m max. 1310mm : 50W/m max.
Power+ system	Power optimization system with DMX driver by individual control of the channels allowing the light power to be increased by up to 40% depending on the colors used
Use limitations	Drivers, if not delivered by LOuss, must be approved before use All products are tested before delivery
Warranty	Life span: L80B10 at 50 000 hours (80% remaining flux) 3-year parts and labor warranty. This warranty covers problems related to the manufacture and components of our products The warranty does not apply if the product has been opened, modified or repaired Damage caused by improper connection, lightning, power surges or misuse is not covered Repairs are carried out in our workshop

All the connections have to be made before powering up,
otherwise the luminaire could be seriously damaged

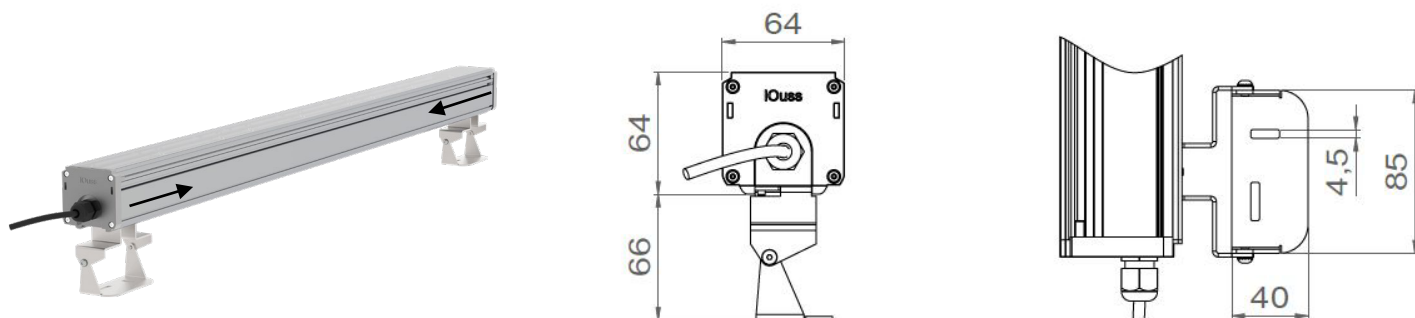


LAMPYRIS2 POWER

Adjustable end-fixed fixing brackets



Adjustable spacing fixing brackets



All the connections have to be made before powering up,
otherwise the luminaire could be seriously damaged

Last update : 2025.08.05

3/5

LOUSS

BEST SAS, Capital 200 000€
RCS Dijon B 408 483 485
TVA/VAT n° : FR94 408 483 485
APE 2612Z

Tel. : +33 380 48 65 68
contact@louss.fr
www.louss.fr
Best & LOUSS

Siège social / Head Office
PA Les Terres d'Or
Route de Saint Philibert
21220 Gevrey Chambertin - FRANCE



LAMPYRIS2 POWER Twin White

The **LAMPYRIS2 TWIN WHITE** is equipped with LEDs with very high **CRI** (color rendering index) and **R9** (red rendering index), as well as **very high efficiency optics**.

This technology, developed by BEST group, of which LOuss is a member, was first installed in 2005 at the Bousquet jewellery store in Montpellier. Since then, it has been supplied to many of our customers, including some of the major jewellery houses.

The combination of two different white color temperatures reveals the color nuances of illuminated objects, as well as tonal variations, in a subtle way, thanks to a rich color spectrum.

2900K LEDs (warm white-yellow) bring out the best in jewelry, watches, yellow and rose gold items and warm shades in general.

4500K LEDs (cool bluish white) are ideal for jewelry, watches and items made of silver or steel, as well as cool shades and diamonds.

The **32mm-diameter optics** we use are highly efficient, enabling us to obtain very tight beams with a high number of candelas in the axis, giving the objects a radiant appearance.



The combination of the two color temperatures, together with the multiplication of narrow beams, creates a **3D lighting effect**, giving relief to illuminated objects which become bright and radiant.

All the connections have to be made before powering up,
otherwise the luminaire could be seriously damaged

Last update : 2025.08.05

4/5

LOuss

BEST SAS, Capital 200 000€
RCS Dijon B 408 483 485
TVA/VAT n° : FR94 408 483 485
APE 2612Z

Tel. : +33 380 48 65 68
contact@louss.fr
www.louss.fr
Best & LOuss

Siège social / Head Office
PA Les Terres d'Or
Route de Saint Philibert
21220 Gevrey Chambertin - FRANCE

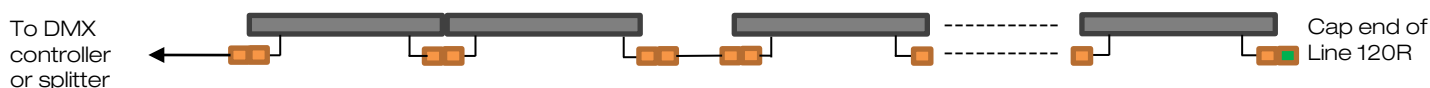


LAMPYRIS2 POWER

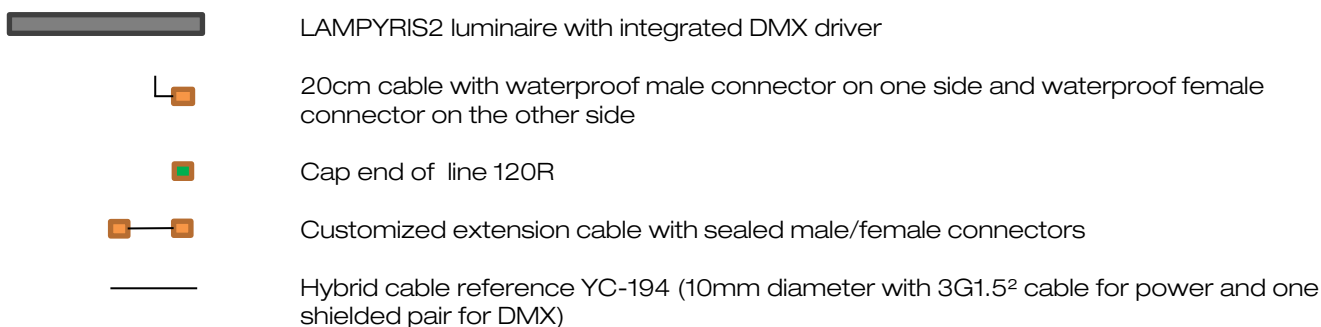
Connection guideline

Input/output connector version

Each luminaire is equipped with 2 waterproof metal connectors with 20cm locking cable
Cables output at the rear for a daisy-chain installation to obtain a continuous line



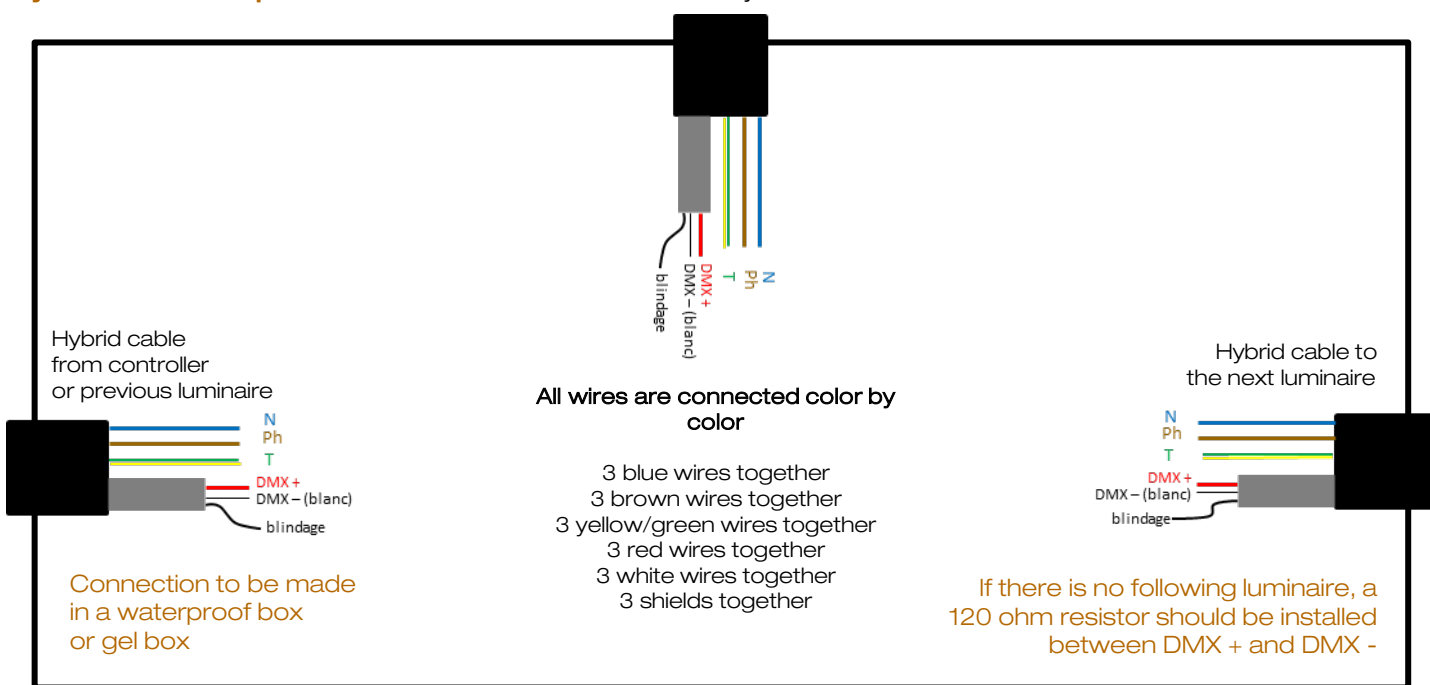
20 DMX luminaires maximum - 15 meters of LAMPYRIS2 maximum (600W)



Maximum total cable length from DMX controller (or splitter) to last luminaire = 300m
Beyond that, a repeater or splitter is required

Hybrid cable output version

Luminaire's hybrid cable



All the connections have to be made before powering up,
otherwise the luminaire could be seriously damaged

Louss

Last update : 2025.08.05

5/5