









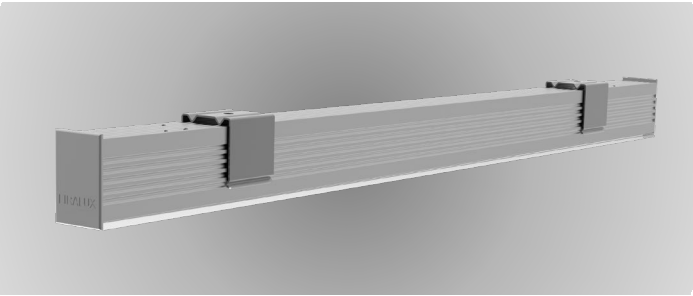


2535

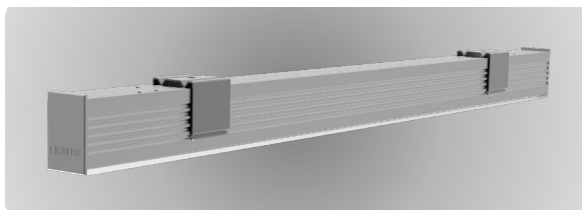
 indoor	 IP20	 Ta 25°			made in FRANCE
 outdoor	 IP65	 Ta 25°			made in FRANCE



2535

Range	Linear LED light allowing continuous light lines						
Description	<p>Natural anodized aluminum profile</p> <p>LED strip - IP20</p> <p>LED Engine - IP65</p> <p>Single opal diffuser, or delivered in a clip-on roll to create continuous light lines</p> <p>Natural aluminum end caps</p> <p>Fixing clips (2 per meter)</p>						
Dimensions	<p>Width : 28mm (with fixing clips)</p> <p>Height : 39mm to 52mm (with fixing clips)</p> <p>Length upon request up to 3,000mm per luminaire</p>						
LED characteristics	2700K – 3000K – 3500K – 4000K						
LED Strip / Engine	Color Temperature	LED Power W/m			CRI	Cut-out size	LED/m
FIRALED 160 – IP20 (other upon request)	2700K – 3000K 3500K - 4000K	10.4	15.5	18	90	50mm	160
LED Engine - IP65	2700K – 3000K 3500K – 4000K	9.6	14.4	19.2	90-95	100mm	120
Separate power supply	<p>24V constant voltage</p> <p>For the US & Canada use a remote UL class 2 power supply</p>						
Connection	<p>LED Strip :</p> <p>5m maximum per driver's output or branch circuit</p> <p>LED Engine :</p> <p>9.6W – 7m max. in series</p> <p>14.4W – 5m max. in series</p> <p>19.2W – 3.5m max. in series</p>						
Use Limitations	<p>The product must be installed into a ventilated area</p> <p>Any use with an ambient temperature higher than the specified ambient temperature (Ta) would lead to a more rapid mortality of the product and the withdrawal of our guarantees</p> <p>The drivers, if not delivered by LOuss, must be approved before use</p>						
Warranty	<p>Life span: L80-B10 = 35,000 hours (80% remaining flux) at 30°C ambient temperature</p> <p>3-year parts and labor warranty</p> <p>The warranty does not apply to products that have been opened, modified or repaired and does not cover the effects of a wrong connection, careless, abusive handling, overvoltage, lighting injury, as well as the normal wear of the product</p> <p>All products are electrically tested and receive a functional burn-in</p>						

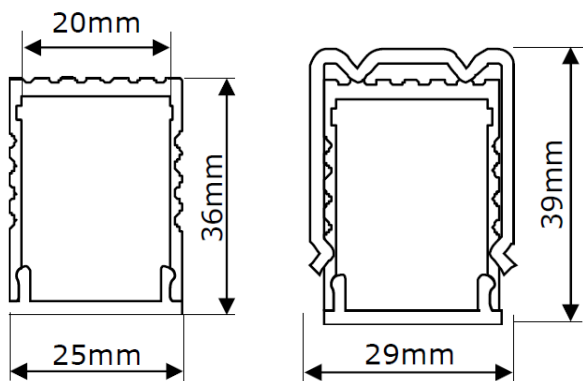
All the connections have to be made before powering up,
otherwise the luminaires could be seriously damaged



2535

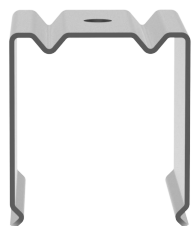
Dimensions & Installation guide

Natural anodized aluminum profile



Profile + fixing clips

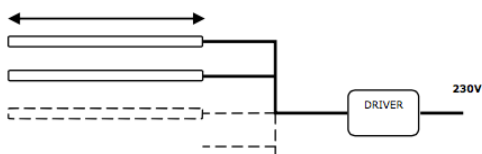
Fixing clips (2 per meter)



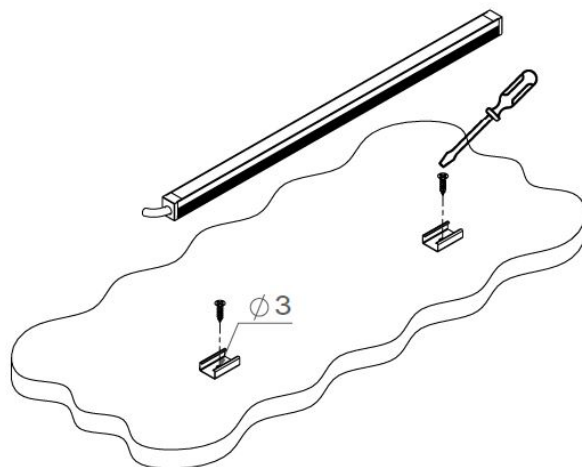
LED Strip – Cut-out size 50mm
LED Engine – Cut-out size 100mm



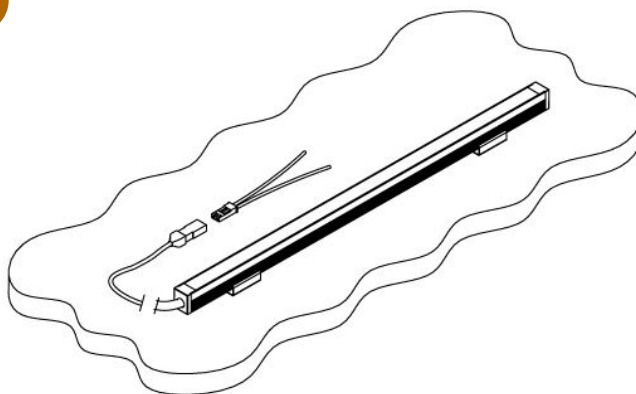
5m max. per driver's output



1



2



3



All the connections have to be made before powering up,
otherwise the luminaires could be seriously damaged

LOUSS

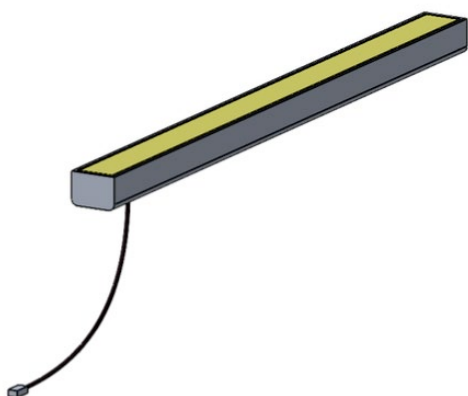
Last update : 2025.07.24

3/4
Firalux & LOUSS brands

SARL, Capital 40 000€
RCS DIJON B 503 367 245
TVA/VAT n°: FR24 503 367 245
APE 4676Z

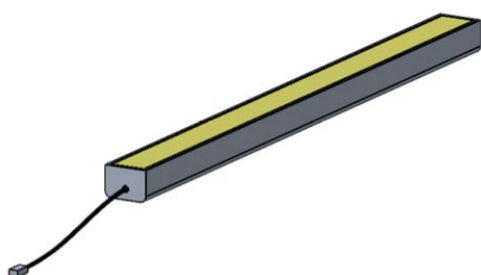
Tel. : +33 380 48 65 68
contact@louss.fr
www.louss.fr
Best group

Siège social / Head Office
PA Les Terres d'Or
Route de Saint Philibert
21220 Gevrey Chambertin - FRANCE



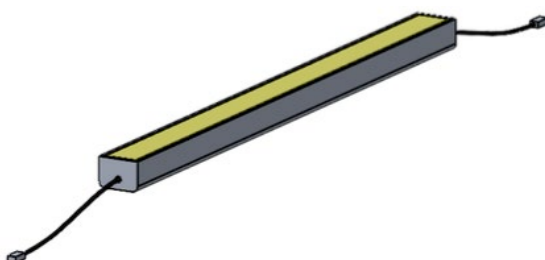
Cable below

110mm or 250mm cable + male quick connector on 1 end
or
1m cable + male quick connector on 1 end



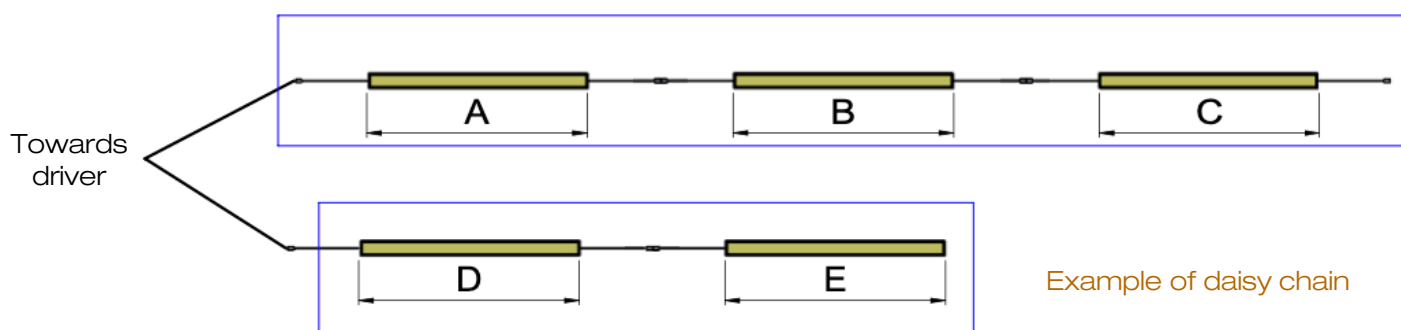
Cable on 1 end

110mm or 250mm cable + male quick connector on 1 end
or
1m cable + male quick connector on 1 end



Daisy chain

110mm or 250mm cable + male quick connector on 1 end
+
110mm or 250mm cable + female quick connector on the other end



Create as many lines as needed to respect the maximum length per line, according to the selected LED strip and the wattage of the driver

All the connections have to be made before powering up,
otherwise the luminaires could be seriously damaged