

AURORE D42 WALL-MOUNTED



AURORE D42 ROUND WALL-MOUNTED

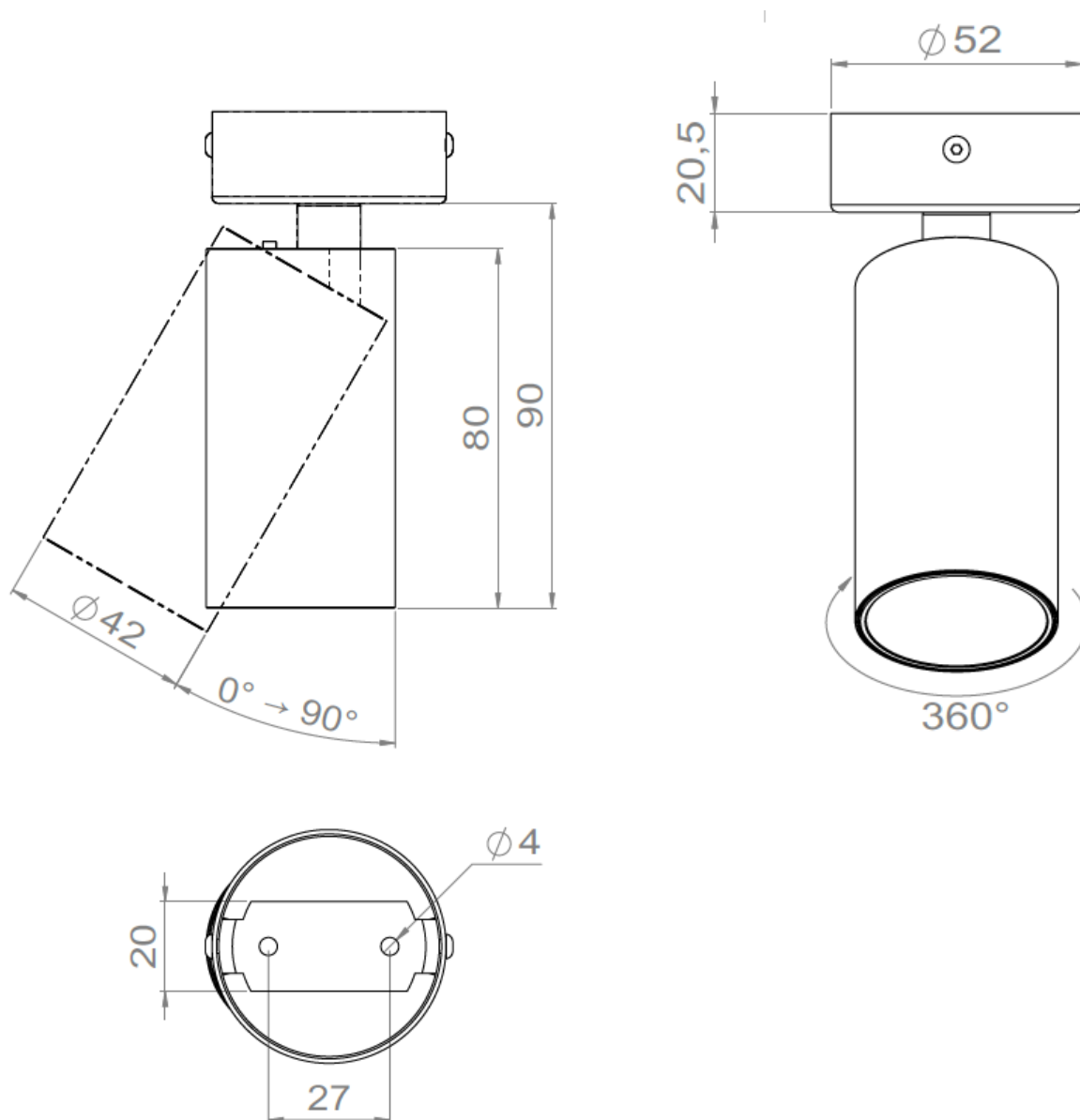
Range	Highly adjustable luminaires for general & accent lighting
Description	Luminaire equipped with low luminance spotlight Rotation 360° - Adjustable tilt 90° max Easily changeable LED, optics and accessories on-site without any tool, with integrated Permuto Easy Swap system (see page 4)
Finish	White RAL 9003 matt finish Black RAL 9005 matt finish (other upon request)
Dimensions	Spotlight diameter : 42mm Spotlight length : 80mm Wall-mounted box diameter : 52mm
Net weight	0.150kg
LED characteristics	2700K - 3000K – 3500K – 4000K – 5000K (other upon request) MacAdam ellipse : 3 SDCM CRI90 (standard version) – CRI95, R9 > 80
Optical beams	6° - 10° - 15° - 20° - 25° - 30° - 35° - 40° - 55° - 60° - Elliptical UGR < 15
Accessories	Filters, honeycomb grids upon request
Luminous flux	300 to 800 lumen according to version
Connection	Supplied with 0.5m cable Or connectors in the box
Power supply	Remote constant current driver 700mA max. according to version Dimmable driver upon request For US & Canada, use a driver UL class 2
Power	4W to 10W according to version
Use limitations	The product must be installed into a ventilated area Any use with an ambient temperature higher than the specified ambient temperature (Ta) would lead to a more rapid mortality of the product and the withdrawal of our guarantees The drivers, if not delivered by LOuss, must be approved before use
Warranty	Life span: L80B10 at 50,000 hours (80% remaining flux) at 25°C ambient temperature. 3-year parts and labour warranty The warranty does not apply to products that have been opened, modified or repaired and does not cover the effects of a wrong connection, careless, abusive handling, overvoltage, lighting injury, as well as the normal wear of the product All products are electrically tested and received a functional burn-in

All the connections have to be made before powering up,
otherwise the luminaires could be seriously damaged

Last update: 2025/06/17



AURORE D42 ROUND WALL-MOUNTED



All the connections have to be made before powering up,
otherwise the luminaires could be seriously damaged

lOuss

Last update: 2025/06/17

Firalux & LOuss brands

SARL, Capital 40 000€
RCS DIJON B 503 367 245
TVA/VAT n°: FR24 503 367 245
APE 4676Z

Tel. : +33 380 48 65 68
contact@louss.fr
www.louss.fr
Best group

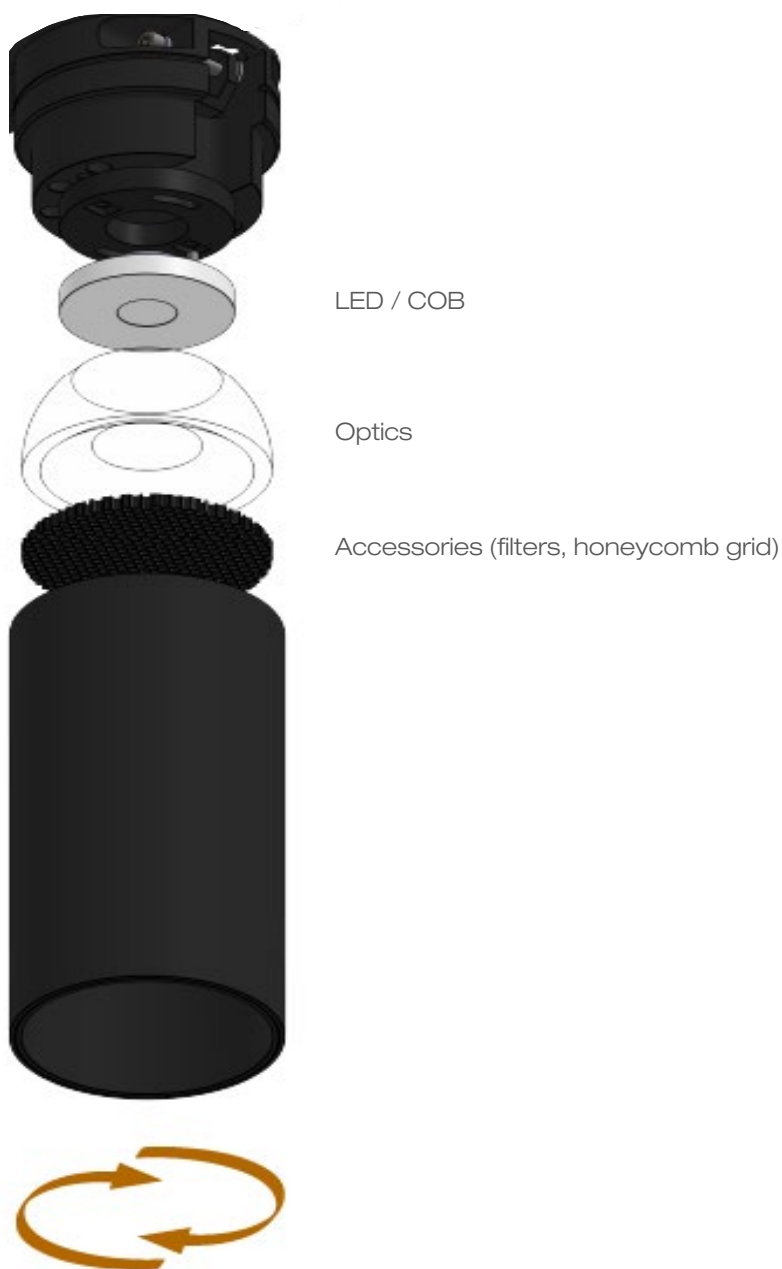
Siège social / Head Office
PA Les Terres d'Or
Route de Saint Philibert
21220 Gevrey Chambertin - FRANCE



AURORE D42 ROUND WALL-MOUNTED



LOuss **Permuto** – easy swap system



All the connections have to be made before powering up,
otherwise the luminaires could be seriously damaged

LOuss

Last update: 2025/06/17

Firalux & LOuss brands

SARL, Capital 40 000€
RCS DIJON B 503 367 245
TVA/VAT n°: FR24 503 367 245
APE 4676Z

Tel. : +33 380 48 65 68
contact@louss.fr
www.louss.fr
Best group

Siège social / Head Office
PA Les Terres d'Or
Route de Saint Philibert
21220 Gevrey Chambertin - FRANCE