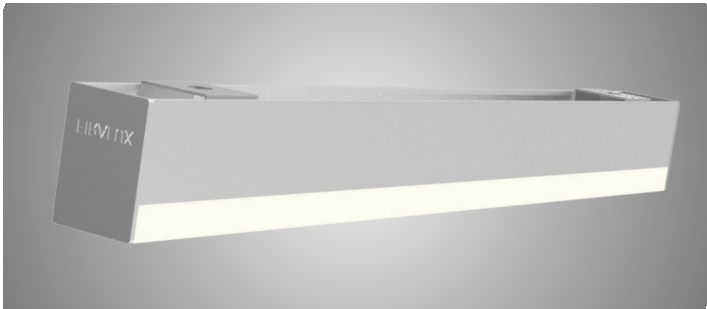
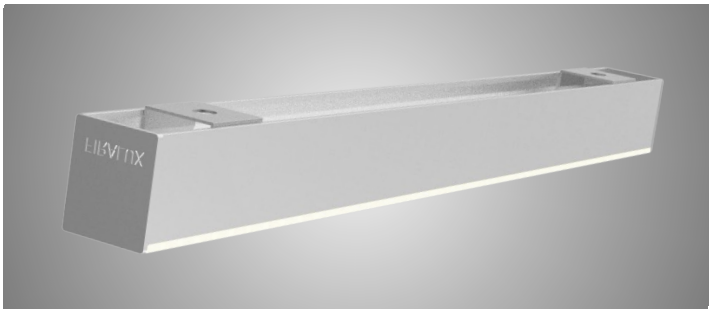




XS1415 • XS1419



XS1415 • XS1419

Range	Linear LED light				
Description	Natural anodized aluminum profile Clear or frosted diffuser 2 end caps Fixing clips (2 per meter)				
Dimensions	XS1415		XS1419		
	Width : 14mm (with fixing clips) Height : 15mm (with fixing clips) Length upon request up to 2,500mm		Width : 14mm (with fixing clips) Height : 19mm (with fixing clips) Length upon request up to 2,500mm		
LED characteristics	2700K – 3000K – 3500K – 3000K+3500K – 4000K CRI 90 R9 > 50				
Separate power supply	24V constant voltage For the US & Canada use a remote UL class 2 power supply				
LED strip	Color Temperatures	LED Power W/m	CRI	Cut-out size	LED/m
FIRASLIM 120cc (other upon request)	2700K – 3000K - 3000K+3500K - 4000K	9.6	90	50mm	120
	2700K – 3000K 3500K – 4000K	14.4	90	50mm	120
	2700K – 3000K – 4000K	19.2	90	50mm	120
Connection	5m maximum per driver’s output				
Use Limitations	The product must be installed into a ventilated area Any use with an ambient temperature higher than the specified ambient temperature (Ta) would lead to a more rapid mortality of the product and the withdrawal of our guarantees The drivers, if not delivered by LOuss, must be approved before use				
Warranty	Life span: L80-B10 = 35,000 hours (80% remaining flux) at 30°C ambient temperature 3-year parts and labor warranty The warranty does not apply to products that have been opened, modified or repaired and does not cover the effects of a wrong connection, careless, abusive handling, overvoltage, lighting injury, as well as the normal wear of the product All products are electrically tested and receive a functional burn-in				

All the connections have to be made before powering up,
otherwise the luminaires could be seriously damaged



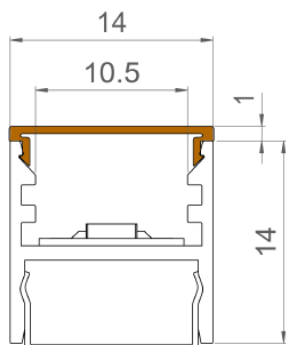
Last update : 2025.07.23



XS1415

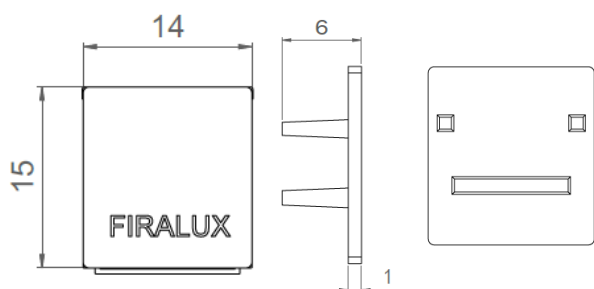
Dimensions & Installation guide

Natural anodized aluminum profile

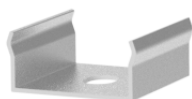


— Diffuser

End caps



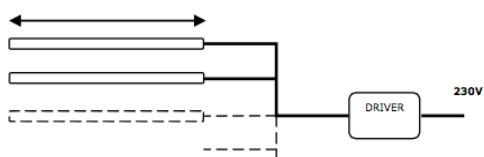
Fixing clips (2 per meter)



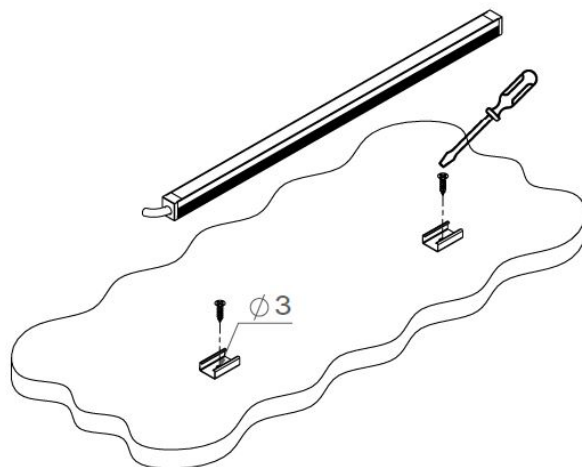
LED strip – Cut-out size 50mm



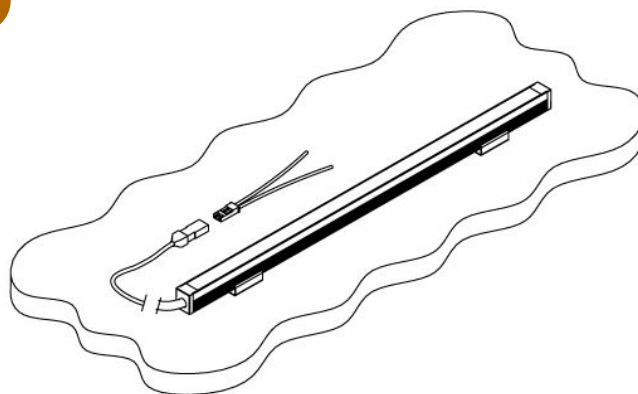
5m max per driver's output



1



2



3



All the connections have to be made before powering up,
otherwise the luminaires could be seriously damaged

Louss

Last update : 2025.07.23

3/5

BEST SAS, Capital 200 000€
RCS Dijon B 408 483 485
TVA/VAT n° : FR94 408 483 485
APE 2612Z

Tel. : +33 380 48 65 68
contact@louss.fr
www.louss.fr
Best & LOuss

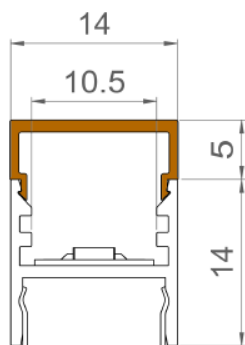
Siège social / Head Office
PA Les Terres d'Or
Route de Saint Philibert
21220 Gevrey Chambertin - FRANCE



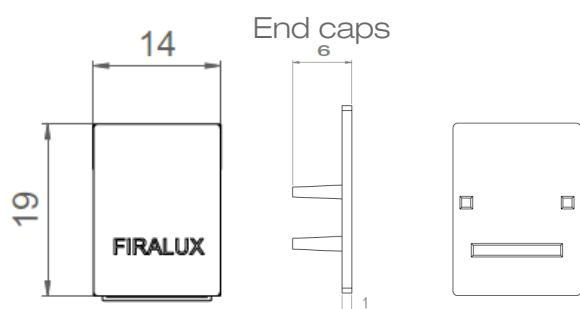
XS1419

Dimensions & Installation guide

Natural anodized aluminum profile



— Diffuser



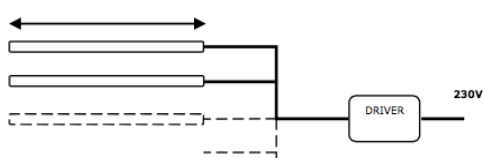
Fixing clips (2 per meter)



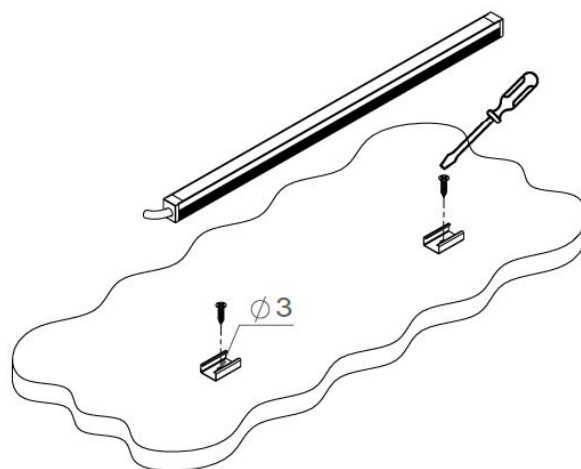
LED strip – Cut-out size 50mm



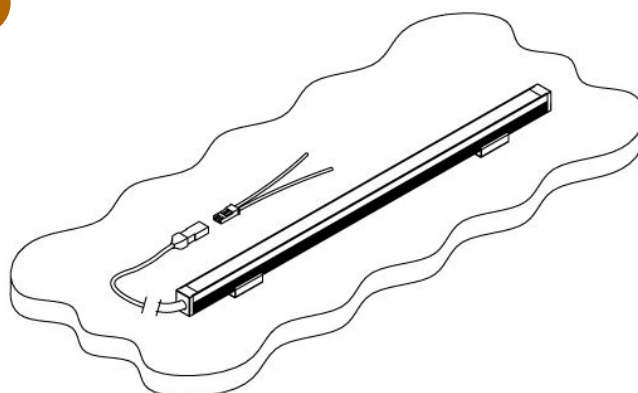
5m max per driver's output



1



2



3



All the connections have to be made before powering up,
otherwise the luminaires could be seriously damaged

Louss

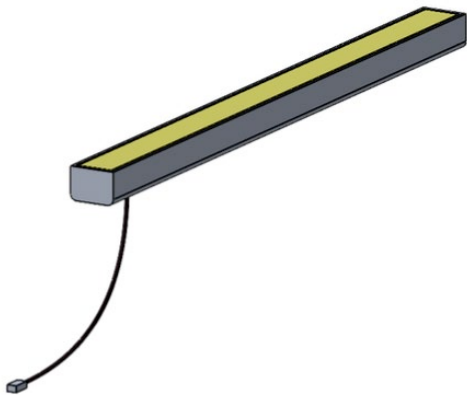
Last update : 2025.07.23

4/5

BEST SAS, Capital 200 000€
RCS Dijon B 408 483 485
TVA/VAT n° : FR94 408 483 485
APE 2612Z

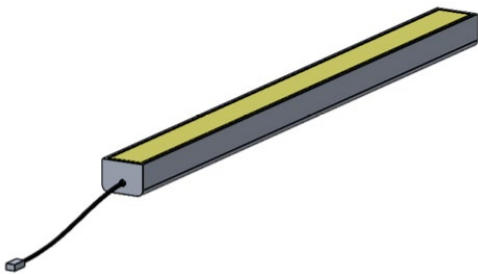
Tel. : +33 380 48 65 68
contact@louss.fr
www.louss.fr
Best & LOuss

Siège social / Head Office
PA Les Terres d'Or
Route de Saint Philibert
21220 Gevrey Chambertin - FRANCE



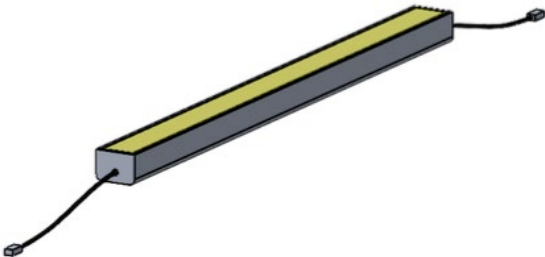
Cable below

110mm or 250mm cable + male quick connector on 1 end
or
1m cable + male quick connector on 1 end



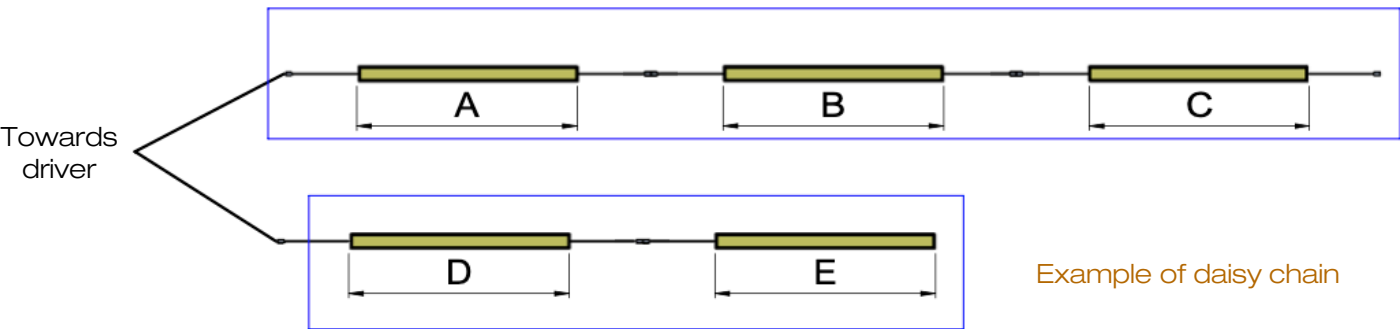
Cable on 1 end

110mm or 250mm cable + male quick connector on 1 end
or
1m cable + male quick connector on 1 end



Daisy chain

110mm or 250mm cable + male quick connector on 1 end
+
110mm or 250mm cable + female quick connector on the other end



Example of daisy chain

Create as many lines as needed to respect the maximum length per line, according to the selected LED strip and the wattage of the driver

All the connections have to be made before powering up, otherwise the luminaires could be seriously damaged