

# Wouss

Lighting Emotion



SCAPINI S3



SCAPINI S4

**SCAPINI**

*Designed by Benoit LALLOZ*



SCAPINI

•

SCAPINI S3

•

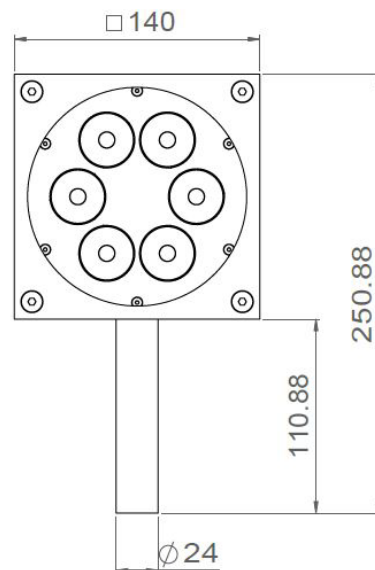
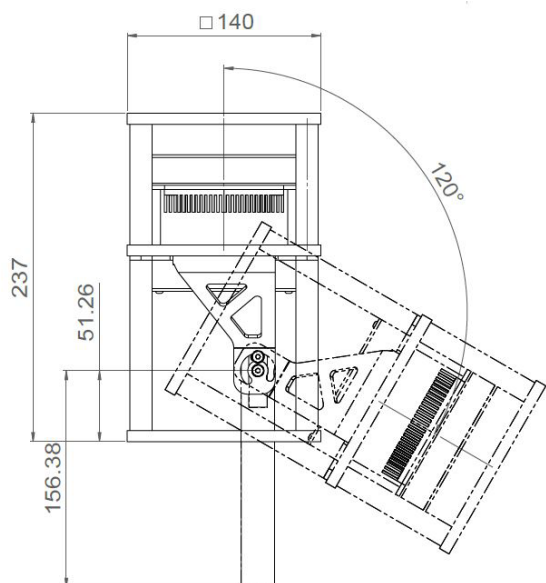
SCAPINI S4

Range	Scapini S3	Scapini S4
	Spotlight for accent lighting	Spotlight for ambient lighting
Description	Black or natural anodized aluminum body Directional bracket	
Dimensions & Weight	Scapini S3	Scapini S4
	Spotlight length : 237mm Spotlight width : 140mm	Spotlight length : 325mm Spotlight width : 200mm Bracket width : 150mm
	6.6 kg	xxx kg
LED characteristics	Scapini S3	Scapini S4
	6 LEDs : 3000K – 4000K (other upon request)	18 LEDs : 3000K – 4000K (other upon request)
Optical beams	6° - 15° - 35° (other upon request)	
Connection	Supplied with 0.5m cable (more length upon request) 230V direct connection	
Integrated Power supply	230 Vac For the US & Canada, use UL class 2 driver	
Power	Scapini S3	Scapini S4
	15W max.	50W max.
Use limitations	The product must be installed into a ventilated area. Any use with an ambient temperature higher than the specified ambient temperature (Ta) would lead to a more rapid mortality of the product and the withdrawal of our guarantees The drivers, if not delivered by LOuss, must be approved before use	
Warranty	Life span: L80B10 at 50,000 hours (80% remaining flux) at 25°C ambient temperature. 3-year parts and labor warranty The warranty does not apply to products that have been opened, modified or repaired and does not cover the effects of a wrong connection, careless, abusive handling, overvoltage, lighting injury, as well as the normal wear of the product All products are electrically tested and received a functional burn-in	

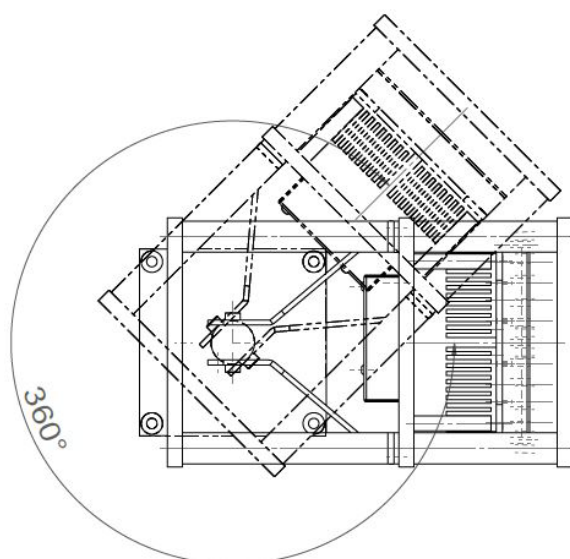
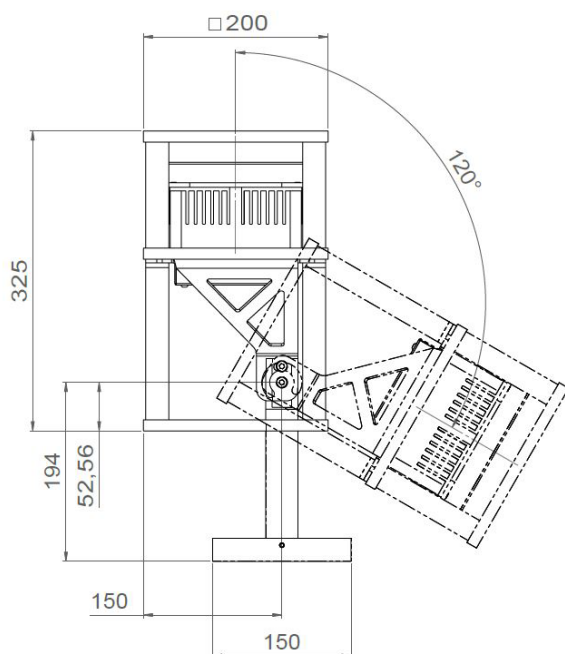
All the connections have to be made before powering up,  
otherwise the luminaires could be seriously damaged.



## SCAPINI S3



## SCAPINI S4



All the connections have to be made before powering up,  
otherwise the luminaires could be seriously damaged.

Wouss

Last update : 2025.07.01

3/3

BEST SAS, Capital 200 000€  
RCS Dijon B 408 483 485  
TVA/VAT n° : FR94 408 483 485  
APE 2612Z

Tel. : +33 380 48 65 68  
contact@louss.fr  
[www.louss.fr](http://www.louss.fr)  
Best & LOuss

Siège social / Head Office  
PA Les Terres d'Or  
Route de Saint Philibert  
21220 Gevrey Chambertin - FRANCE