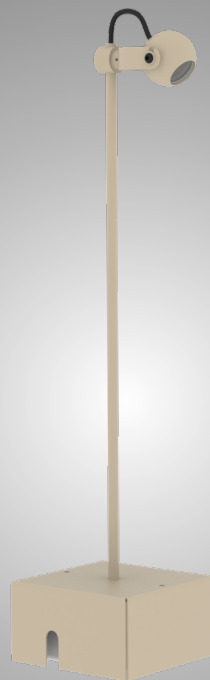
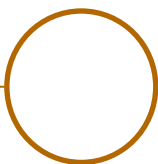




ON-PLATE
Standard • Low Luminance



HOLLOW HOOK
Standard • Low Luminance



ROLLED GLISS



ROLLED SPIKE

•

On-Plate

•

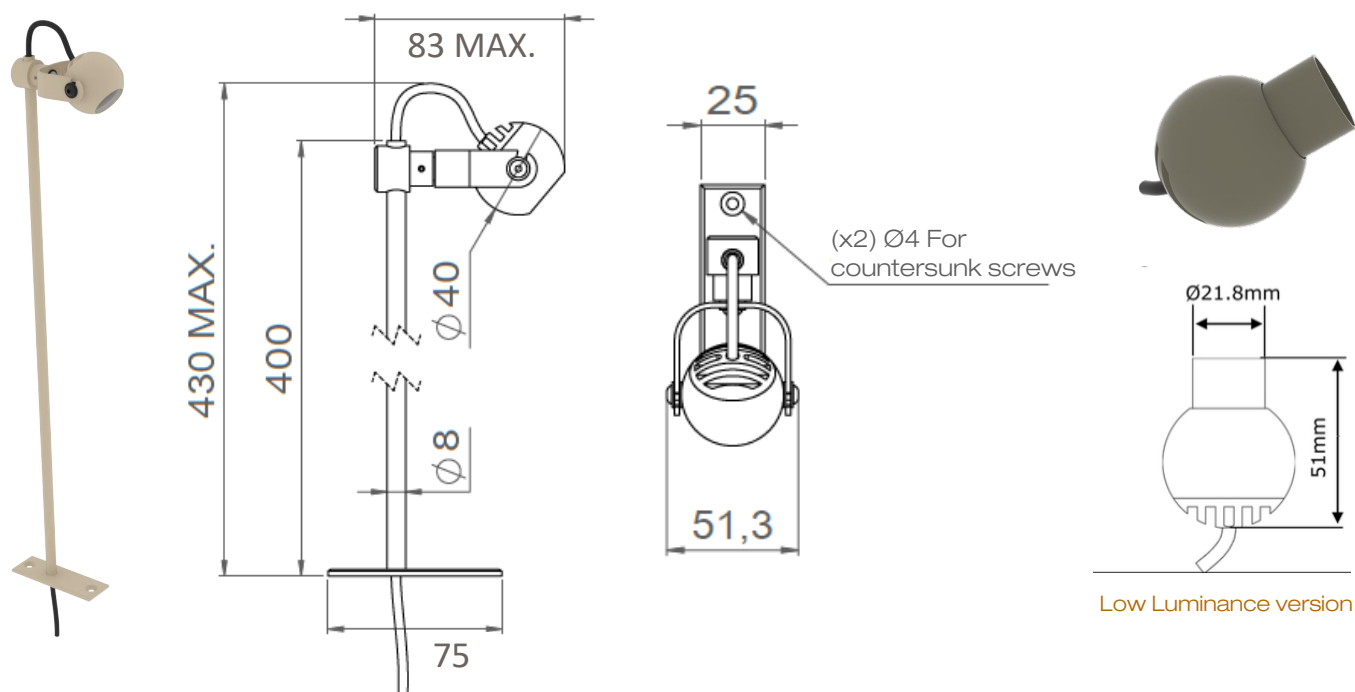
Hollow Hook

Range	Spotlight for the highlighting of architectural details	
Description	<div>1 LED or 3 LEDs floodlighting</div> <div>Rotating ball on a bracket</div> <div>Supplied in Standard version or with a Low Luminance tube</div> <div>Mounted on a plate or on a Hollow Hook allowing the integration of the electrical connection</div> <div>Rod length upon request up to 400mm</div>	
Finish	Stone hue RAL 1013 matt finish (other upon request)	
Dimensions	Spotlight	Holding device
	<div>Diameter : 40mm</div> <div>Width : 51.3mm (bracket included)</div> <div>Length : 51mm (Low Luminance)</div> <div>Total length : 83mm (fixation included)</div>	<div>Rod height : 400mm max.</div> <div>Plate dimensions : 75 x 25mm</div> <div>Hook dimensions : 110 x 110 x 60mm</div>
LED characteristics	<div>1 LED or 3 LEDs : 2700K – 3000K – 4000K – 5000K (other upon request)</div> <div>CRI 80</div>	
Optical beams	Intensive – Semi intensive – Extensive – Elliptical	
Connection	Supplied with 1m cable (more length upon request)	
Power supply	<div>On-Plate version : 700mA max. external constant current driver</div> <div>Hollow Hook version : 700mA max. integrated constant current driver</div> <div>For the US & Canada use a UL class 2 driver</div>	
LED power	<div>1 LED : 2.4W at 700mA max.</div> <div>3 LEDs : 7.2W at 700mA max.</div>	
Use limitations	<div>The product must be installed into a ventilated area</div> <div>Any use with an ambient temperature higher than the specified ambient temperature (Ta) would lead to a more rapid mortality of the product and the withdrawal of our guarantees</div> <div>The drivers, if not delivered by LOuss, must be approved before use</div>	
Warranty	<div>Life span: L80B10 at 50,000 hours (80% remaining flux) at 25°C ambient temperature</div> <div>3-year parts and labor warranty</div> <div>The warranty does not apply to products that have been opened, modified or repaired and does not cover the effects of a wrong connection, careless, abusive handling, overvoltage, lighting injury, as well as the normal wear of the product</div> <div>All products are electrically tested and received a functional burn-in</div>	

All the connections have to be made before powering up,
otherwise the luminaires could be seriously damaged.

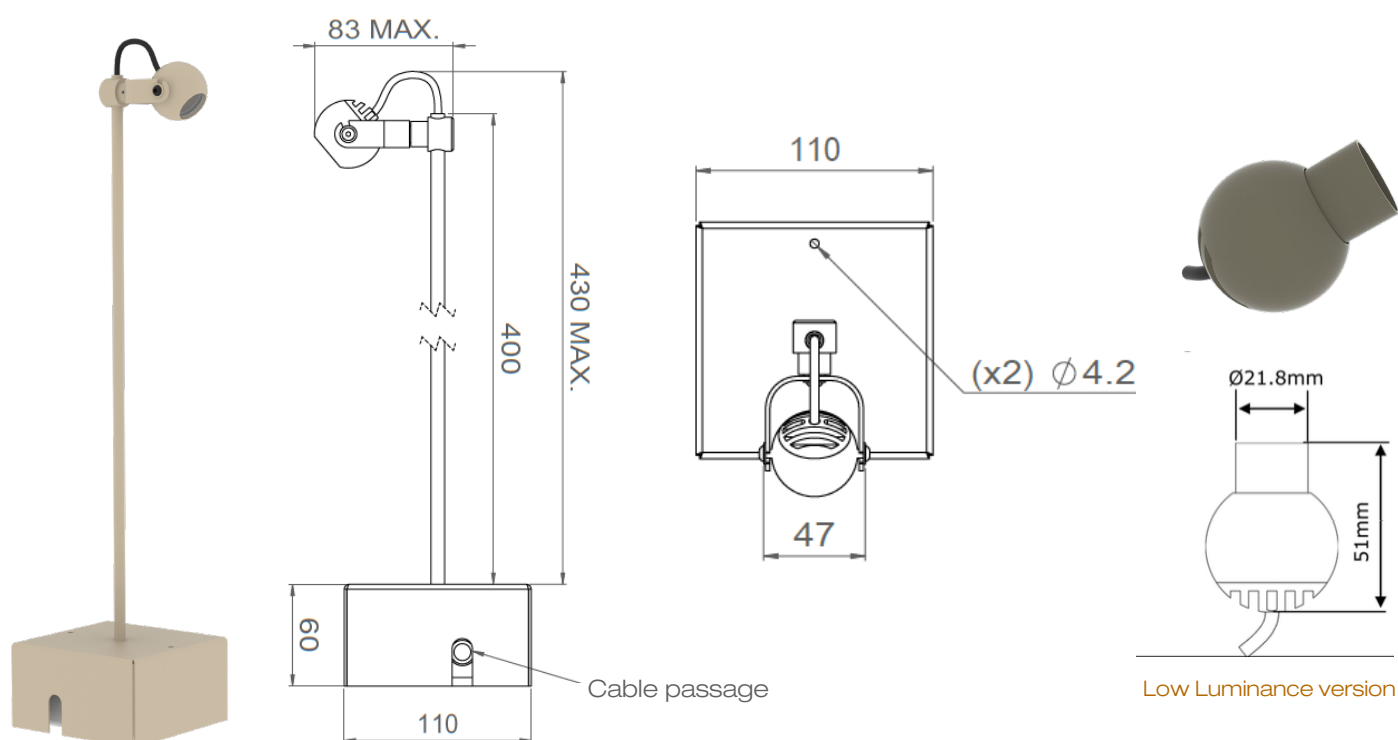
ROLLED GLISS

On-Plate version



ROLLED GLISS

Hollow Hook version



All the connections have to be made before powering up,
otherwise the luminaires could be seriously damaged.

Louss

Last update : 2025.07.29

3/3

Firalux & LOuss brands