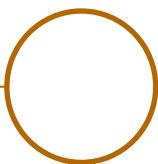
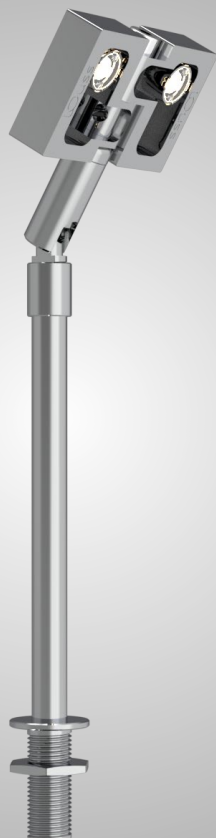


Wouss

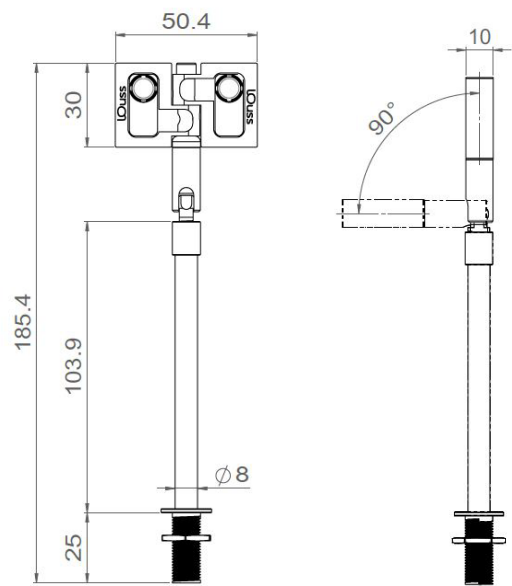
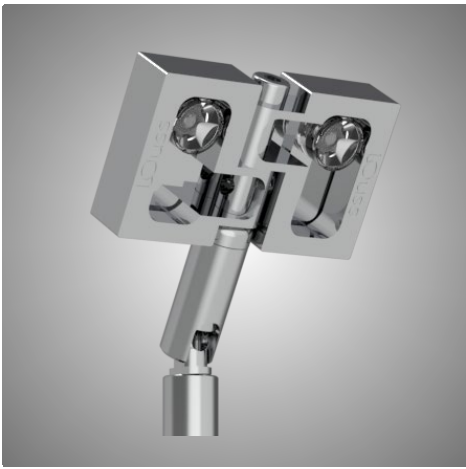
Lighting Emotion



PAPILIO

The airy and elegant luminaire





PAPILIO

Range	Accent decorative luminaire
Description	Sophisticated and elegant adjustable luminaire on a rod, dedicated to precision lighting and highlighting of showcases
Finishing	Mirror finish or bright gold finish
Dimensions	Head : 50.4 x 30mm Rod length : 100mm, 200mm or 333mm Rod diameter : 8mm
LED characteristics	2 LED : 2700K - 3000K – 4000K (other upon request)
Optical beams	15° - 25° - 40° - 80° (other upon request)
Connection	Delivered with 0.5m standard cable (more length upon request) Individual connection or connection in series on external constant current driver
Separate power supply	500mA max. external constant current driver For the US & Canada use a UL class 2 driver
LED power	350mA : 2.5W 500mA : 3.6W
Use limitations	The product must be installed into a ventilated area Any use with an ambient temperature higher than the specified ambient temperature (Ta) would lead to a more rapid mortality of the product and the withdrawal of our guarantees The drivers, if not delivered by LOuss, must be approved before use
Warranty	Life span: L80B10 at 50,000 hours (80% remaining flux) at 25°C ambient temperature. 3-year parts and labour warranty The warranty does not apply to products that have been opened, modified or repaired and does not cover the effects of a wrong connection, careless, abusive handling, overvoltage, lighting injury, as well as the normal wear of the product All products are electrically tested and received a functional burn-in

All the connections have to be made before powering up,
otherwise the luminaires could be seriously damaged

Last update: 2025.07.09