



MINIFILED STAIRS



MINIFILED STAIRS

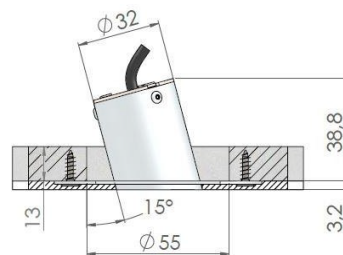
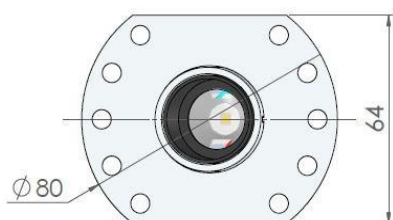
Range	Recessed spotlight for accent lighting
Description	Anodized aluminium body Supplied with a low luminance tube & a mounting frame
Finish	Velvet-looking black matt finish
Dimensions	Installation diameter : 55mm Plate dimensions : 80 x 64mm Length : 38.5 to 38.8mm according to version (frame included)
Spotlight weight	± 0.025 kg
LED characteristics	1 or 2 LED : 2700K - 3000K - 3500K - 4000K (other upon request) Or combination of colour temperatures upon customer's request MacAdam ellipse: 3 SDCM CRI: 90
Optical beam	8° - 14° - 21° - 26° - 30° - 40°
Luminous flux	1 LED : 80 lumen 2 LEDs : 160 lumen
Connection	Delivered alone or with easy plug system for daisy chain : 110mm or 250mm wires and male + female quick connectors + shunt end of line, for serial connection
Separate power supply	700mA max remote constant current driver For the US & Canada, use a UL class 2 driver
LED power	1 LED : 1W 2 LEDs : 2W
Use limitations	The product must be installed into a ventilated area Any use with an ambient temperature higher than the specified ambient temperature (Ta) would lead to a more rapid mortality of the product and the withdrawal of our guarantees The drivers, if not delivered by LOuss, must be approved before use
Warranty	Life span: L80B10 at 50,000 hours (80% remaining flux) at 25°C ambient temperature 3-year parts and labour warranty The warranty does not apply to products that have been opened, modified or repaired and does not cover the effects of a wrong connection, careless, abusive handling, overvoltage, lighting injury, as well as the normal wear of the product All products are electrically tested and received a functional burn-in

All the connections have to be made before powering up,
otherwise the luminaires could be seriously damaged.

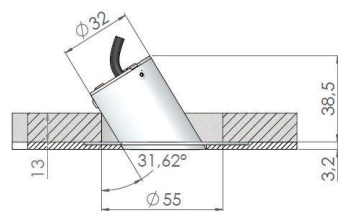
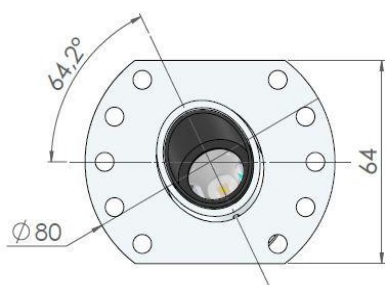


MINIFILED STAIRS

Installation from below with mounting frame

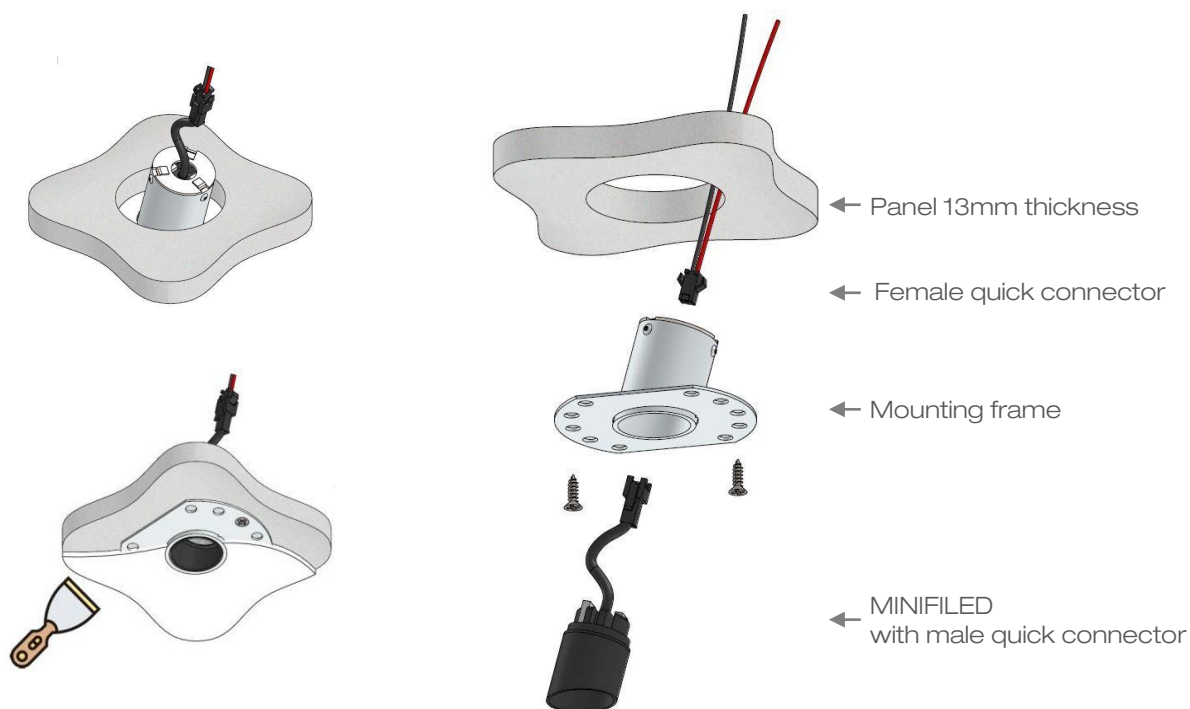


Angle 15°



Angle : 75° + 61°

Other angles upon request



All the connections have to be made before powering up,
otherwise the luminaires could be seriously damaged.

lOuss

Last update : 2025.18.07 - R

3/3

BEST SAS, Capital 200 000€
RCS Dijon B 408 483 485
TVA/VAT n° : FR94 408 483 485
APE 2612Z

Tel. : +33 380 48 65 68
contact@louss.fr
www.louss.fr
Best & LOuss

Siège social / Head Office
PA Les Terres d'Or
Route de Saint Philibert
21220 Gevrey Chambertin - FRANCE