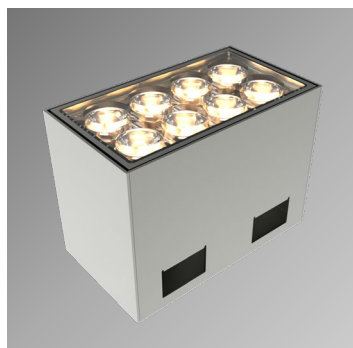
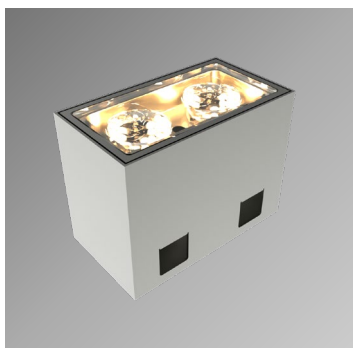




ROME RECESSED

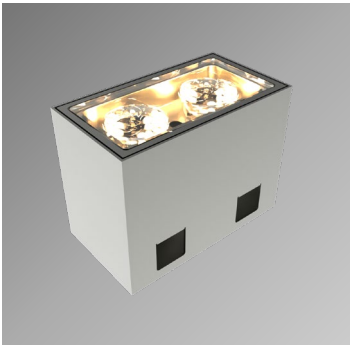




ROME I • II RECESSED

Range	Architectural floodlighting	
Description	Aluminum body Aluminum recessing box Rome I : Extra-clear or striated glass 2x3in1 LEDs Rome II : Extra-clear glass 8 LEDs	
Finish	Paint – RAL 1013 or RAL 7030 (other upon request)	
Dimensions (box included)	Rome I	Rome II
	Length : 67.6mm Width : 37.6mm Height : 50.8mm	Length : 94.0mm Width : 53.0mm Height : 70.0mm
Weight	Rome I	Rome II
	0.17 kg (without recessing box)	0.50 kg (without recessing box)
LED characteristics	2x3in1 LEDs or 8 LEDs : 2200K – 2700K – 3000K – 4000K (other upon request) CRI 90	
Optical beams	Rome I	Rome II
	<ul style="list-style-type: none"> • Elliptical + extra-clear glass • Optic + filter + extra-clear glass • Optic + striated glass 	10° - 15° - 20° - 25° - 30° - 40° - 50° - Elliptical
Connection	Rome I	Rome II
	Supplied with 1m cable (more length upon request) Individual or serial connection on external constant current driver	Supplied with 1m cable (more length upon request)
Separate power supply	Rome I	Rome II
	350mA max. external constant current driver For the US & Canada use a UL class 2 driver	48VCC external power supply For the US & Canada use a UL class 2 power supply
LED power	Rome I	Rome II
	6W max.	20W max.

All the connections have to be made before powering up,
otherwise the luminaire could be seriously damaged.



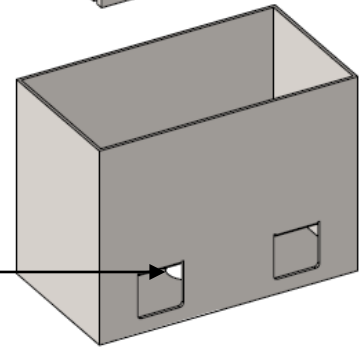
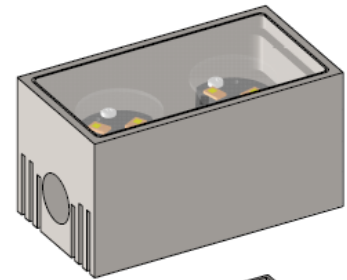
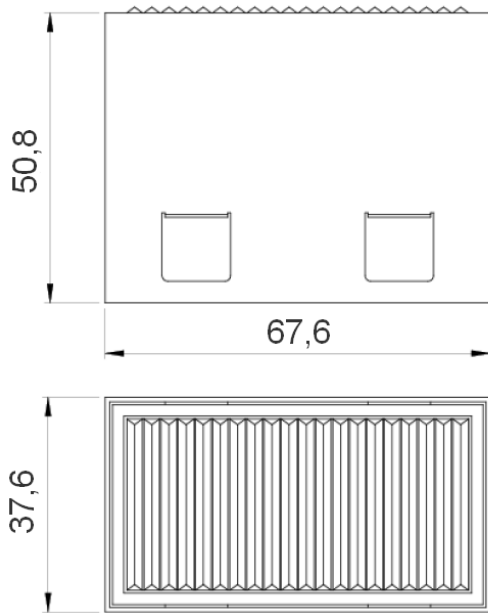
ROME I • II RECESSED

Use limitations	The drivers, if not delivered by LOuss, must be approved before use
Warranty	Life span: L80B10 at 50,000 hours (80% remaining flux) at 25°C ambient temperature 3-year parts and labour warranty The warranty does not apply to products that have been opened, modified or repaired and does not cover the effects of a wrong connection, careless, abusive handling, overvoltage, lighting injury, as well as the normal wear of the product All products are electrically tested and received a functional burn-in

All the connections have to be made before powering up,
otherwise the luminaire could be seriously damaged.



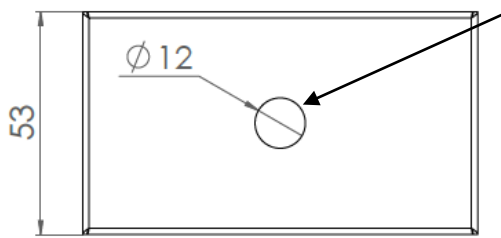
ROME I Recessed



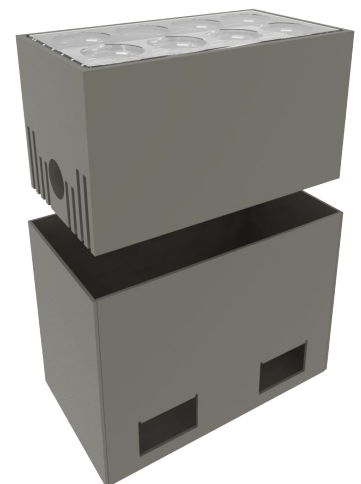
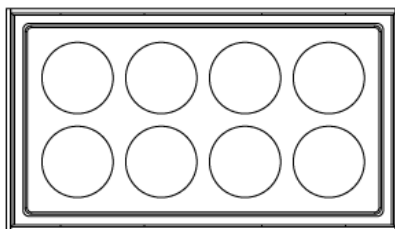
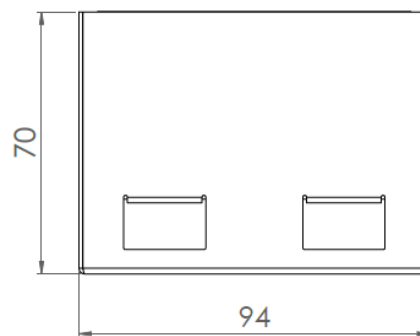
Cable output
from below



ROME II Recessed



Cable output
from below



All the connections have to be made before powering up,
otherwise the luminaire could be seriously damaged.