

## ROME RANGE





**ROME I**  
Surface-mounted

**ROME I**  
Recessed

**ROME II**  
Surface-mounted  
Magnetic

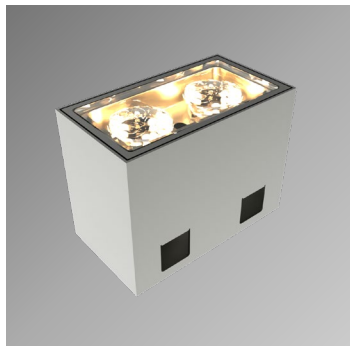
**ROME II**  
Recessed

<b>Range</b>	Architectural floodlighting	
<b>Description</b>	<b>Rome I</b>	<b>Rome II</b>
	Aluminum body Stainless steel fixing clip (Surface-Mounted) or Aluminum recessing box (Recessed) Extra-clear or striated glass 2x3in1 LEDs	Aluminum body Magnets (Surface-mounted Magnetic) or Aluminum recessing box (Recessed) Extra-clear glass 8 LEDs
<b>Finish</b>	Paint – RAL 1013 or RAL 7030 (other upon request)	
<b>Dimensions</b>	<b>Rome I • Surface-mounted</b>	<b>Rome I • Recessed</b>
	Length : 65.0mm Width : 35.6mm Height : 35.0mm 38.1mm (fixing clip included)	Length : 67.6mm (box included) Width : 37.6mm (box included) Height : 50.8mm (box included)
	<b>Rome II • Surface-mounted Magnetic</b>	<b>Rome II • Recessed</b>
	Length : 90.0mm Width : 50.0mm Height : 50.0mm 54.5 à 56.5mm (magnets included)	Length : 94.0mm (box included) Width : 53.0mm (box included) Height : 70.0mm (box included)
<b>Weight</b>	<b>Rome I</b>	<b>Rome II</b>
	0.17 kg (without fixing clip / recessing box)	0.50 kg (without magnets / recessing box)
<b>LED characteristics</b>	2x3in1 LEDs or 8 LEDs : 2200K – 2700K – 3000K – 4000K (other upon request) CRI 90	
<b>Optical beams</b>	<b>Rome I</b>	<b>Rome II</b>
	<ul style="list-style-type: none"> <li>• Elliptical + extra-clear glass</li> <li>• Optic + filter + extra-clear glass</li> <li>• Optic + striated glass</li> </ul>	10° - 15° - 20° - 25° - 30° - 40° - 50° - Elliptical
<b>Connection</b>	<b>Rome I</b>	<b>Rome II</b>
	Supplied with 1m cable (more length upon request) Individual or serial connection on external constant current driver	Supplied with 1m cable (more length upon request)

All the connections have to be made before powering up,  
otherwise the luminaire could be seriously damaged.



**ROME I**  
Surface-mounted



**ROME I**  
Recessed



**ROME II**  
Surface-mounted  
Magnetic



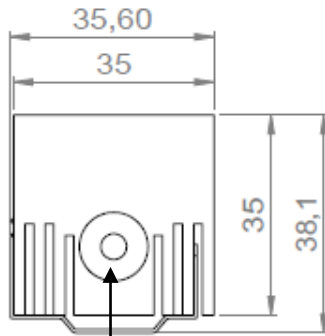
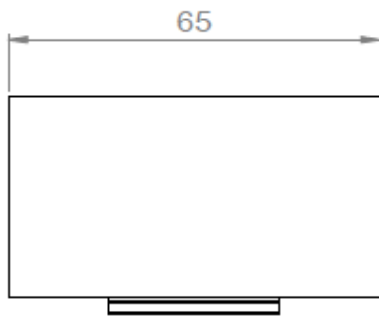
**ROME II**  
Recessed

	<b>Rome I</b>	<b>Rome II</b>
<b>Separate power supply</b>	350mA max. external constant current driver For the US & Canada use a UL class 2 driver	48VCC external power supply  For the US & Canada use a UL class 2 power supply
<b>LED power</b>	<b>Rome I</b>	<b>Rome II</b>
	6W max.	20W max.
<b>Use limitations</b>	The drivers, if not delivered by LOuss, must be approved before use	
<b>Warranty</b>	<p>Life span: L80B10 at 50,000 hours (80% remaining flux) at 25°C ambient temperature 3-year parts and labour warranty</p> <p>The warranty does not apply to products that have been opened, modified or repaired and does not cover the effects of a wrong connection, careless, abusive handling, overvoltage, lighting injury, as well as the normal wear of the product</p> <p>All products are electrically tested and received a functional burn-in</p>	

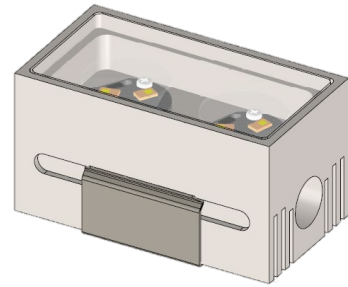
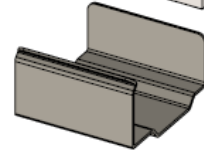
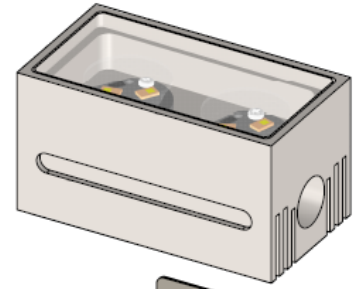
All the connections have to be made before powering up, otherwise the luminaire could be seriously damaged.



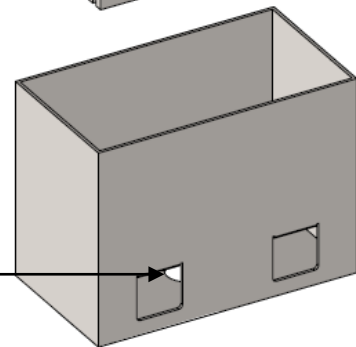
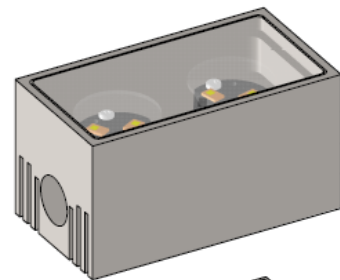
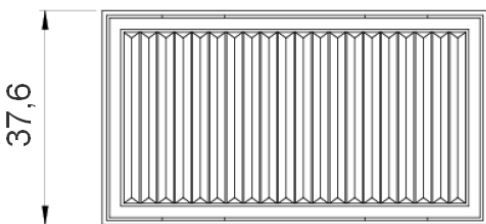
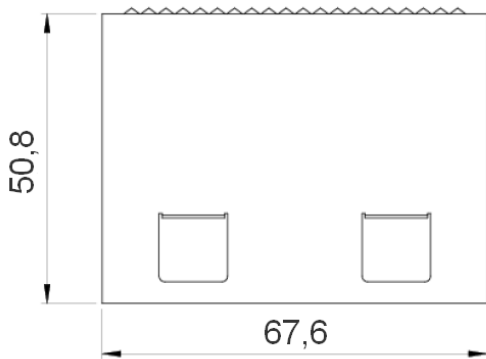
## ROME I Surface-mounted



Cable output



## ROME I Recessed

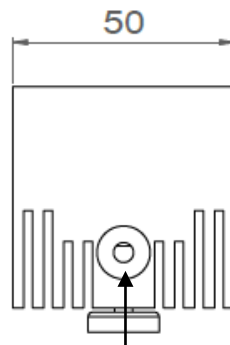
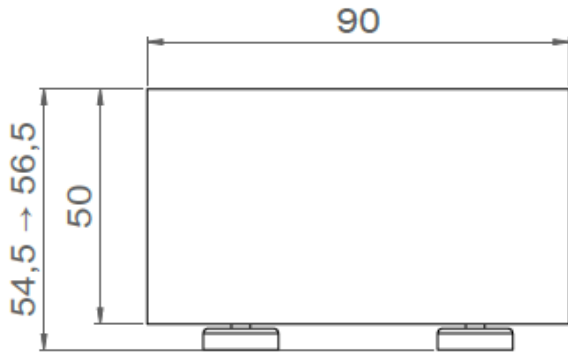


Cable output  
from below

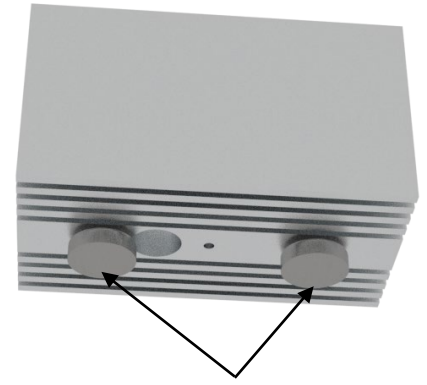
All the connections have to be made before powering up,  
otherwise the luminaire could be seriously damaged.



## ROME II Surface-mounted Magnetic



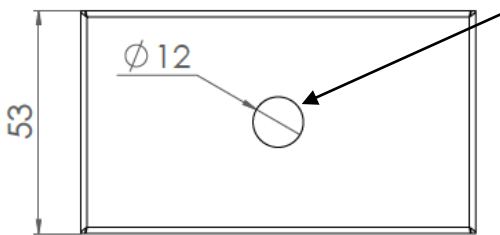
Cable output



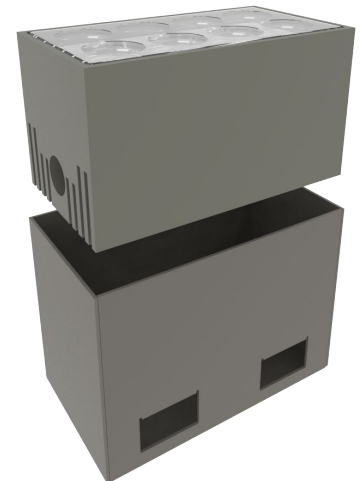
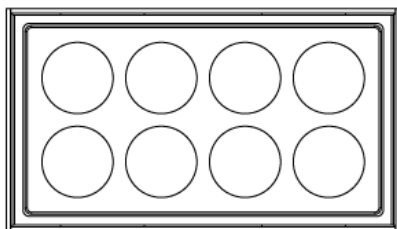
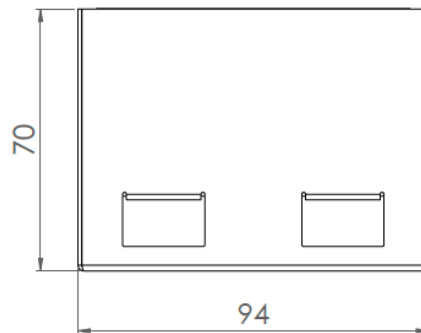
Magnets



## ROME II Recessed



Cable output  
from below



All the connections have to be made before powering up,  
otherwise the luminaire could be seriously damaged.