



MINISTAFF

LED spotlights in duo



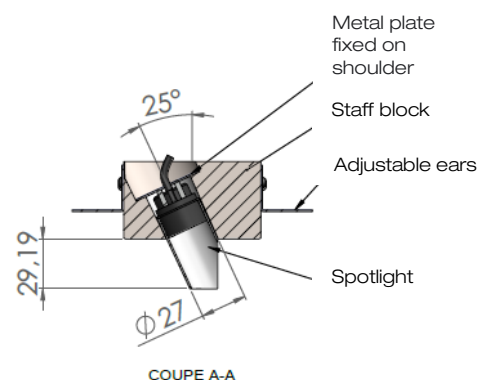
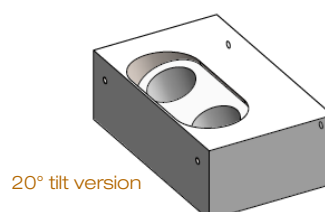
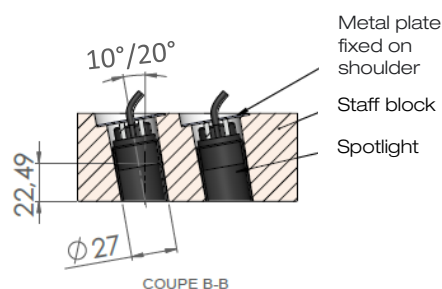
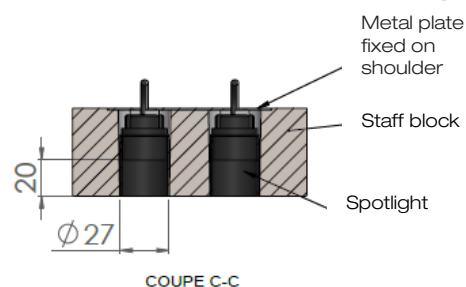


MINISTAFF • Duo Straight • Duo Tilted • Duo Wall-Washer

| | | | |
|---------------------|--|--|--|
| Range | Duo of recessed luminaires for general & accent lighting | | |
| Description | Cluster of 2 low luminance spotlights inserted in a recessed gypsum board equipped with fixing brackets for BA13 plasterboard installation Ministaff Duo Straight : no tilt Ministaff Duo Tilted : 10° or 20° fixed tilt Ministaff Duo Wall-Washer : 25° fixed tilt | | |
| Finish | Black matt finish spotlights Raw finish gypsum board | | |
| Dimensions | Duo Straight | Duo Tilted | Duo Wall-Washer |
| | Spots diameter : 27mm Length : 130mm Width : 80mm Height : 48.5mm | Spots diameter : 27mm Length : 130mm Width : 80mm Height : 52mm | Spots diameter : 27mm Length : 130mm Width : 80mm Height : 45mm |
| LED characteristics | 2 LEDs 2700K - 3000K - 3500K - 4000K (other upon request) MacAdam ellipse : 3 SDCM CRI 90 | | |
| Optical beams | Ministaff Duo Straight & Ministaff Duo Tilted : 10° - 20° - 40° Ministaff Duo Wall Washer : 40° | | |
| Luminous flux | 110 lumen | | |
| Connection | Supplied with 0.5m cable for serial cabling | | |
| Power supply | 700mA max. external constant current driver For the US & Canada use a driver UL class 2 | | |
| Power | 4W max. | | |
| Use limitations | The product must be installed into a ventilated area Any use with an ambient temperature higher than the specified ambient temperature (Ta) would lead to a more rapid mortality of the product and the withdrawal of our guarantees The drivers, if not delivered by LOuss, must be approved before use | | |
| Warranty | Life span: L80-B10 = 35,000 hours (80% remaining flux) at 30°C ambient temperature The warranty applies to components and fabrication supplied by Louss The warranty does not apply to products that have been opened, modified or repaired and does not cover the effects of a wrong connection, careless, abusive handling, overvoltage, lighting injury, as well as the normal wear of the product All products are electrically tested and receive a functional burn-in | | |

All the connections have to be made before powering up,
otherwise the luminaires could be seriously damaged

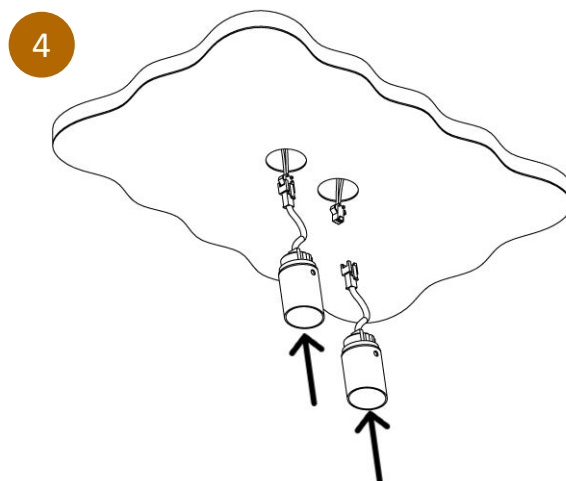
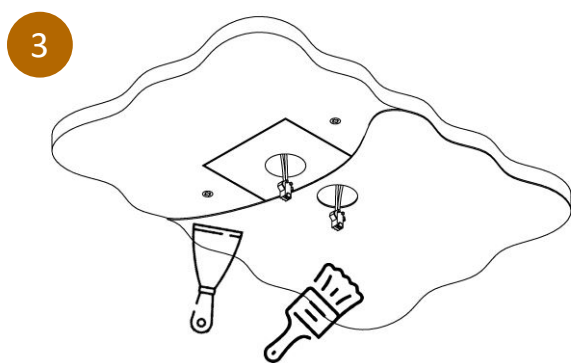
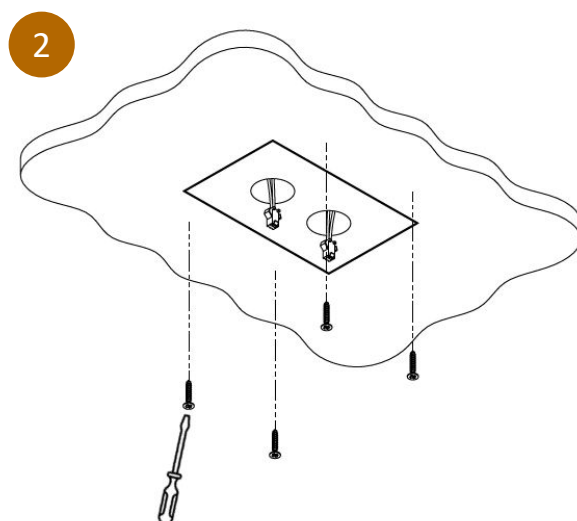
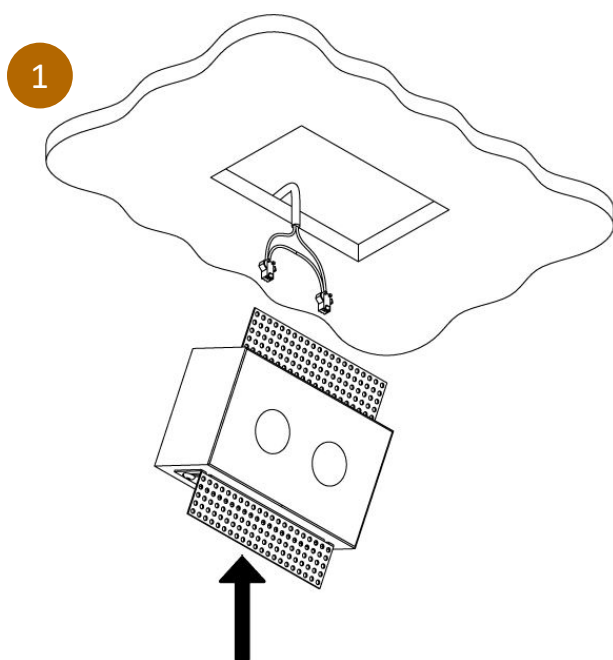






MINISTAFF • Duo Straight • Duo Tilted • Duo Wall-Washer

Installation guide



All the connections have to be made before powering up,
otherwise the luminaires could be seriously damaged

Last update : 2025/06/26

4/4

Louss

SARL, Capital 40 000€
RCS DIJON B 503 367 245
TVA/VAT n°: FR24 503 367 245
APE 4676Z

Tel. : +33 380 48 65 68
contact@louss.fr
www.louss.fr
Best group

Siège social / Head Office
PA Les Terres d'Or
Route de Saint Philibert
21220 Gevrey Chambertin - FRANCE

Firalux & LOuss brands