









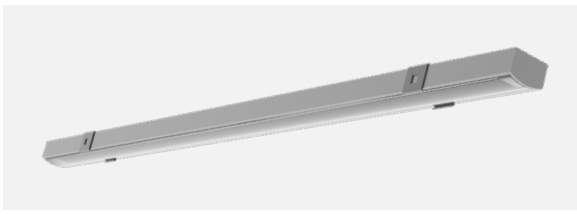


**SL8**

 indoor	 IP20	 Ta 25°		 CE	made in <b>FRANCE</b>
 outdoor	 IP65	 Ta 25°		 CE	made in <b>FRANCE</b>



## SL8

<b>Range</b>	Linear LED light						
<b>Description</b>	SL8 natural anodized aluminum profile LED strip (IP20) LED Engine (IP65) Opal or clear diffuser 2 natural aluminum end caps Fixing clips						
<b>Dimensions</b>	Width : 26mm (with fixing clips) Height : 10mm (with fixing clips) Length upon request up to 3,000mm						
<b>LED characteristics</b>	2700K – 3000K – 3500K – 4000K CRI 90 R9 > 50						
<b>Separate power supply</b>	24V constant voltage For the US & Canada use a remote UL class 2 power supply						
<b>LED Strip / Engine</b>	<b>Color temperature</b>	<b>LED power W/m</b>			<b>CRI</b>	<b>Cut-out size</b>	<b>LED/m</b>
FIRALED 160 – IP20 (other upon request)	2700K – 3000K 3500K – 4000K	10.4	15.5	18 UGR<25	90	50mm	160
LED engine – IP65	2700K – 3000K 3500K – 4000K	9.6	14.4	19.2	90-95	100mm	120
<b>Connection</b>	<b>LED Strip :</b> 5m maximum per driver's output <b>LED Engine :</b> 9.6W – 7m max. in series 14.4W – 5m max. in series 19.2W – 3.5m max. in series						
<b>Use Limitations</b>	The product must be installed into a ventilated area Any use with an ambient temperature higher than the specified ambient temperature (Ta) would lead to a more rapid mortality of the product and the withdrawal of our guarantees The drivers, if not delivered by LOuss, must be approved before use						
<b>Warranty</b>	Life span: L80-B10 = 35,000 hours (80% remaining flux) at 30°C ambient temperature 3-year parts and labor warranty The warranty does not apply to products that have been opened, modified or repaired and does not cover the effects of a wrong connection, careless, abusive handling, overvoltage, lighting injury, as well as the normal wear of the product All products are electrically tested and receive a functional burn-in						

All the connections have to be made before powering up,  
otherwise the luminaires could be seriously damaged

LOuss

Creation : 2021.07.29 / Last update : 2025.07.23

2/4

BEST SAS, Capital 200 000€  
 RCS Dijon B 408 483 485  
 TVA/VAT n° : FR94 408 483 485  
 APE 2612Z

Tel. : +33 380 48 65 68  
 contact@louss.fr  
 www.louss.fr  
 Best & LOuss

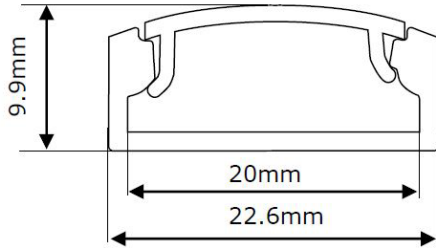
Siège social / Head Office  
 PA Les Terres d'Or  
 Route de Saint Philibert  
 21220 Gevrey Chambertin - FRANCE



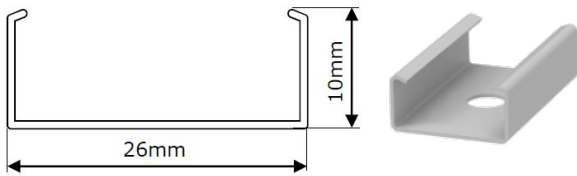
# SL8

## Dimensions & Installation guide

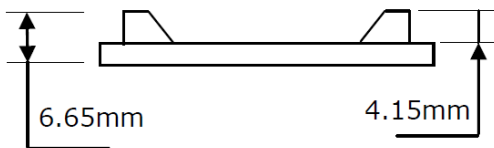
Natural anodized aluminum profile



Fixing clips (2 per meter)



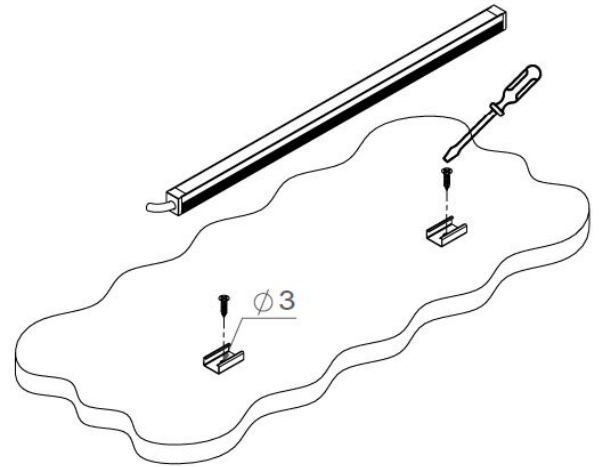
End caps



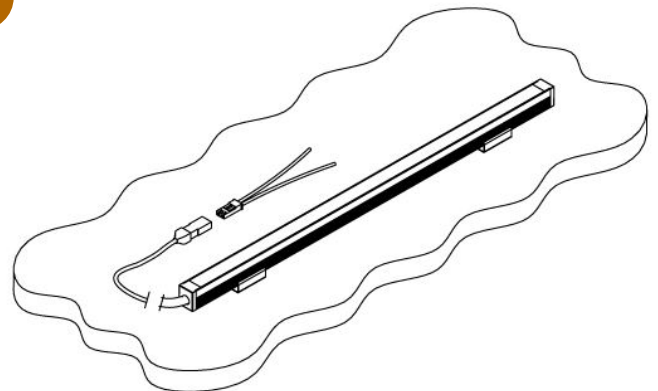
LED strip – Cut-out size 50mm  
LED Engine – Cut out size 100mm



1



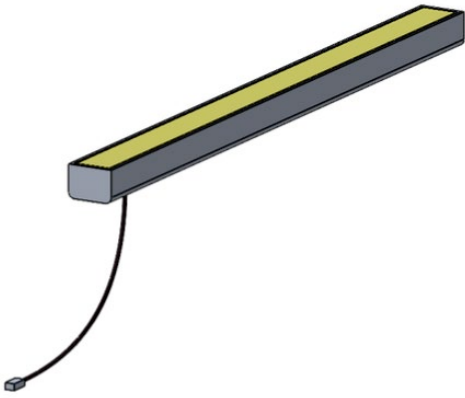
2



3

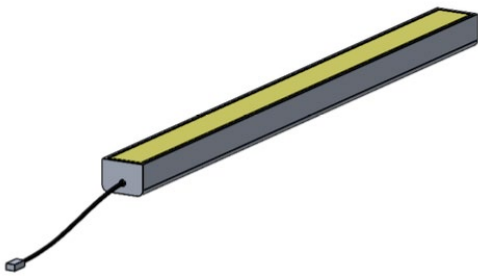


All the connections have to be made before powering up,  
otherwise the luminaires could be seriously damaged



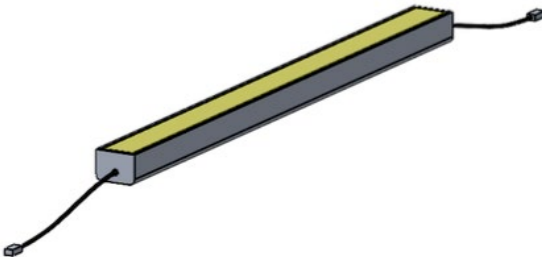
Cable below

110mm or 250mm cable + male quick connector on 1 end  
or  
1m cable + male quick connector on 1 end



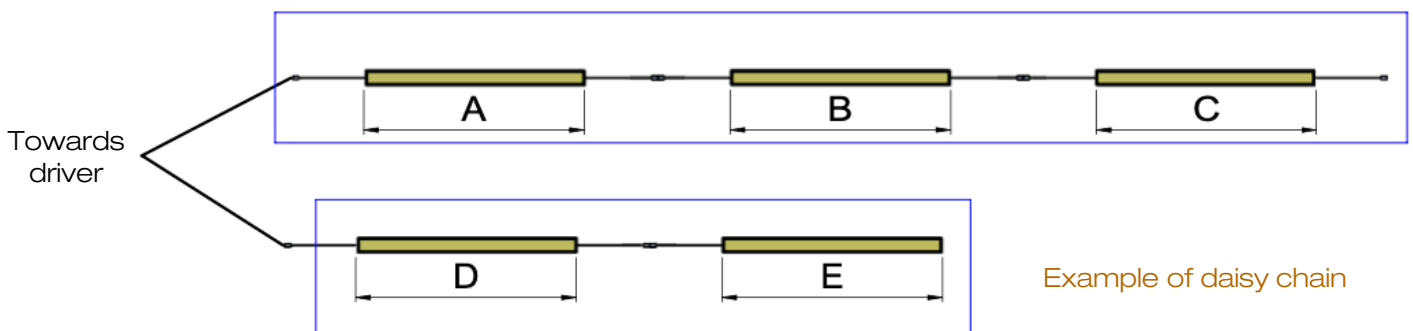
Cable on 1 end

110mm or 250mm cable + male quick connector on 1 end  
or  
1m cable + male quick connector on 1 end



Daisy chain

110mm or 250mm cable + male quick connector on 1 end  
+  
110mm or 250mm cable + female quick connector on the other end



Example of daisy chain

Create as many lines as needed to respect the maximum length per line, according to the selected LED strip and the wattage of the driver

All the connections have to be made before powering up, otherwise the luminaires could be seriously damaged